



**Samsung**

# **New PC Studio**

# Contents

<b>01</b>	<b>About Samsung New PC Studio</b>	
1.1.	System requirements .....	4
1.2.	Installation guide .....	5
<b>02</b>	<b>Configuration</b>	
2.1.	Main screen .....	6
2.2.	Basic stage and applications .....	7
<b>03</b>	<b>Quick start manual</b>	
3.1.	Quick start manual .....	9
<b>04</b>	<b>Basic description</b>	
4.1.	Managing Files .....	10
4.2.	My Computer .....	12
4.3.	Connected device .....	13
4.4.	Searching for a device .....	14
4.5.	Launcher - Toolbox .....	15
4.6.	Launcher - Stage Navigator .....	16
4.7.	Launcher - User stage .....	17
4.8.	Launcher - Update .....	18
4.9.	Launcher - Device update .....	19
4.10.	Launcher - Notify .....	21
4.11.	Launcher - Settings .....	22
4.12.	Launcher - To Web .....	23

# Contents

## 05 Application description

5.1. To do .....	24
5.2. Phone book .....	26
5.3. Memo .....	29
5.4. Scheduler .....	31
5.5. D-day .....	34
5.6. Music Player .....	36
5.7. Music player > Music playlist .....	38
5.8. Video player .....	40
5.9. Video player > Video playlist .....	42
5.10. Image viewer .....	43
5.11. Disk Ripping .....	44
5.12. Disk burning .....	46
5.13. Internet Connector .....	48
5.14. SIM Phonebook .....	50
5.15. Video Converter .....	51
5.16. Message Manager .....	53
5.17. SMS sender .....	55
5.18. MMS sender .....	56
5.19. Email sync .....	57
5.20. Media manager .....	59
5.21. Media manager > Photo editor .....	73
5.22. Media manager > Slide maker .....	75
5.23. Media manager > Video maker .....	77
5.24. Timetable .....	79
5.25. Voice memo .....	81
5.26. Backup and restore .....	82
5.27. Install/Uninstall mobile phone application .....	84
5.28. Connected Home Player.....	86

# 01 About Samsung New PC Studio

## 1.1. System requirements

- ▶ OS: Windows 2000 Family , XP Family , Vista Family
- ▶ CPU : Pentium 600 MHz or higher
- ▶ RAM : 512 MB or high
- ▶ Disc : At least 200 MB of free disc space
- ▶ USB port or Bluetooth device
- ▶ Microsoft DirectX 9.0 or higher
  
- ▶ Please install one of the following pieces of software to connect via Bluetooth:
  - Microsoft Stack: Windows XP Service Pack 2 or higher
  - Widcomm Stack: v. 1.4.2.10 SP5 or higher
  - Bluesoleil Stack: v. 1.6.0 or higher
  - Toshiba Stack: v. 3.0 or higher
  
- ▶ Please check that the following is installed in order to use the additional features:
  - Microsoft Outlook 2002 or higher
  - Internet Explorer 5.0 or higher
  - Windows Media Player 11 or higher

**Note** : An administrator account is required to install the application.

# **01 About Samsung New PC Studio**

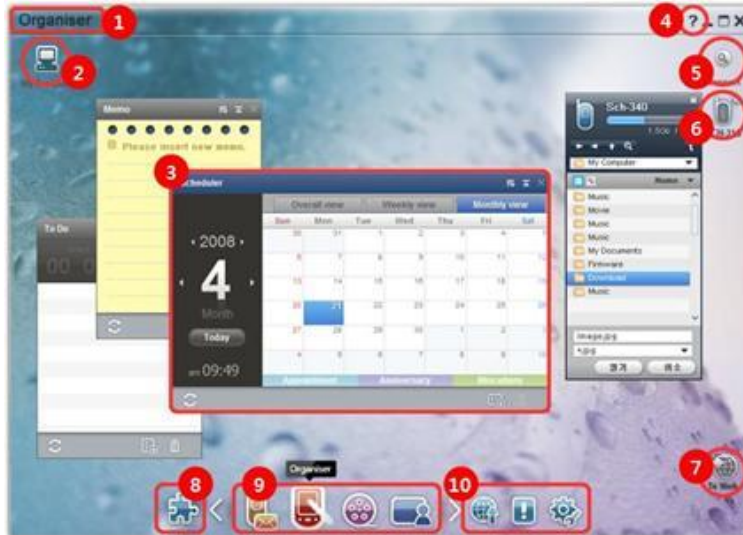
## **1.2. Installation guide**

- 1) The New PC Studio installation application automatically begins upon inserting the New PC Studio CD into the CD-ROM drive.
- 2) Select a language and then click Installation.
- 3) Select the next step according to the installation application information or connect your mobile phone to the PC.
- 4) Execute the New PC Studio icon created on the background screen after completion.

## 02 Configuration

### 2.1. Main screen

The Samsung New PC Studio main screen looks like this:



- ① Stage title
- ② My Computer
- ③ Application
- ④ Help
- ⑤ Search device
- ⑥ Connected device
- ⑦ Launcher - To Web
- ⑧ Launcher - Toolbox
- ⑨ Launcher - Stage navigator
- ⑩ Launcher - Update / Notify / Settings

## 02 Configuration

### 2.2. Basic stage and applications

This section provides an introduction of the Basic stage provided by Samsung New PC Studio and the applications of the corresponding stages.

#### Communicator Stage

This stage provides communication-related functions, including Phonebook.

##### ► Applications

- **Phonebook:** Phonebook allows you to add, edit and delete contacts and groups, as well as synchronize contacts saved in Samsung New PC Studio with your mobile phone and vice versa.
- **SIM Phonebook:** SIM Phonebook allows you to add, edit or delete contacts stored on the SIM card in real time.
- **Internet connector:** Internet connector allows you to connect to the Internet or a corporate communication network through a modem, such as a mobile phone.
- **Message manager:** Message manager allows you to import text (SMS) and multimedia (MMS) messages from your mobile phone and manage them on your PC.
- **Send SMS:** Send a text message written on your PC to your connected mobile phone.
- **Send MMS:** Send a multimedia message written on your PC to your connected mobile phone.
- **Email sync:** This email sync function synchronizes the email message box of a mobile phone connected to the PC and Outlook.

#### Organizer stage

This stage provides personal schedule-related functions, including Scheduler.

##### ► Applications

- **Scheduler:** Scheduler allows you to add, edit and delete schedules, as well as sync schedules between Samsung New PC Studio and your mobile phone.
- **Memo:** Memo allows you to add, edit, and delete memos, as well as synchronize memos saved in Samsung New PC Studio with your mobile phone and vice versa.
- **To Do:** To do allows you to add, edit, and delete planned tasks, as well as synchronize the planned tasks saved in New PC Studio with your mobile phone and vice versa.
- **D-Day:** D-Day allows you to add, edit, and delete D-Days.
- **Timetable:** Timetable allows users to add, edit and delete timetable contents in a mobile phone in real time.
- **Voice memo:** Voice memo allows users to import files from a mobile phone to PC, as well as manage and play them in New PC Studio.

#### Media manager stage

Provides media file management and playback functions.

※ **Toolbox use is limited for the Media Manager stage.**

##### ► Applications

- **Music manager:** You can manage, store, share and play music files in the PC, as well as export and import them to and from Samsung mobile phones and MP3 players.
- **Photo manager:** Photo manager allows users to manage, store, share, play and edit photo files stored in the PC, as well as export and import files to and from Samsung mobile phones.
- **Video manager:** Video manager allows users to manage, store, share, play and edit video files stored in the PC, as well as export and import files to and from Samsung mobile phones.

#### Multimedia application

You can open and use the Multimedia application on any stage via the Toolbox.

##### ► Applications

- **Image viewer:** You can view photos taken by your mobile phone or digital camera, as well as various types of PC images.
- **Music player:** Supports playback of several music file formats, as well as music files supported by Samsung mobile phones and MP3s, and recorded sound files.
- **Video player:** Allows you to play videos taken by your mobile phone and digital camera, as well as various types of PC videos.
- **Video converter:** Allows you to convert the format of video files as necessary for transfer via mobile phone and optimises the playback environment.

- **Disc ripping:** Extracts sound sources from music CDs, and imports music information from the web to apply it more accurately and easily.
- **Disc burning:** Allows you to burn your files to music discs or data discs.

### Other programs

Provides other functions for mobile phone use.

#### ► Applications

- **Back up & Restore:** You can back up data stored in your mobile phone to PC or restore the backup data to the mobile phone.

(Only available for mobile phones with Symbian or Windows Mobile installed)

- **Install/Uninstall mobile phone program:** You can install and uninstall programs in your mobile phone.

(Only available for mobile phones with Symbian or Windows Mobile installed)



## 03 Quick start manual

### 3.1. Quick Start manual

This section gives a glance over the most basic details for operating Samsung New PC Studio.

- Connecting device [\[4.4. Searching device\]](#)
- Transferring files [\[4.1. Managing files\]](#)
- Viewing Stage navigator's description [\[4.6. Launcher - Stage navigator\]](#)
- Making User Stage by using Toolbox [\[4.7. Launcher - User stage\]](#)

## 04 Basic description

### 4.1. Managing files

#### Overview

With Samsung New PC Studio, you can freely send files to My Computer or a connected device via drag and drop.

#### Transferring files

You can transfer files between My Computer and connected devices shown at the top of Samsung New PC Studio. Click the My Computer icon and the Connected device icon to view the file list and send files in various ways.

##### ■ Sending (Copying) files

File transfer between My Computer and Connected device is basically done through copying data.

- 1) Open a window by clicking the **My Computer icon** or the **Connected Device icon**.
- 2) Select a file from the file list.
- 3) To send the selected file, execute one of the following:
  - ▶ Using the mouse, select a file, then drag and drop it to the location to which you want to transfer it. (To copy the file within My Computer or Connected device, then drag and drop it with the **Ctrl** key held down.)
  - ▶ Select a file and click the right button of the mouse.  
Click **Copy** on the menu.  
Go to the location to which you want to transfer it and click the right button of the mouse.  
Click **Paste** on the menu .
    - ▶ Copy the selected file by pressing **Ctrl+C**, the shortcut key.  
And paste it in the location to which you want to transfer it by pressing **Ctrl+V**, the shortcut key.

##### ■ Deleting files

- 1) Open a window by clicking the **My Computer icon** or the **Connected device icon**.
- 2) Select a file from the file list.
- 3) Select a file and right-click on it. Click **Delete** on the menu.
  - ※ Alternatively, select the file and press the **Delete** key on the keyboard.

##### ■ Renaming files

- 1) Open a window by clicking the **My Computer icon** or the **Connected device icon**.
- 2) Select a file from the file list and right-click on it.
- 3) Click **Rename** on the menu.
- 4) Enter the new file name in the blank input space, then click on an empty area in the file list.

##### ■ Converting files

When you send a multimedia file from My Computer to Connected device, New PC Studio allows you to convert an unsupported file type to the file format of the connected device and send it.

- 1) If a file is of a type unsupported at the time of file transfer, a pop-up window appears asking whether you want to perform file conversion.
- 2) Click the **Conversion** button on the pop-up window. Once converted, the file is automatically sent.

#### Handling files

You can use Samsung New PC Studio to handle files in various ways.

##### ■ Exporting to an application

- 1) Open a window by clicking the **My Computer icon** or the **Connected device icon**.
- 2) If a file supported by Samsung New PC Studio is dragged to the application, the file will open. (This function has the same effect as Browse file.)

#### Connect Media Player (MTP)

※ This is available when the device is connected to the PC through Media Player.

##### ■ Refresh

- Updates the playlist and file list and displays updated information in the list area.

## Send file

### ■ Send lists and music files added to Media manager

- 1) Click the **My Computer** or **Connected device** icon to open the window.
- 2) Click the **Send** button at the bottom of the Device icon.
- 3) The music files and playlists added to Media manager are sent to the connected device.
  - ✳ This is available only in the Media manager stage.
  - ✳ The files and playlists stored in the device are not modified or deleted.
  - ✳ The transfer will stop if there is not enough space in the device.

### ■ Drag & drop

- 1) Click the **My Computer** or **Connected device** icon to open the window.
- 2) Select a file you want and drag & drop it to the destination.
- 3) The music file is sent to the destination.

## Playlist

### ■ Select playlist

- 1) Click the **My Computer** or **Connected device** icon to open the window.
- 2) In the playlist area, select the default lists (All, Recently Added, Podcast) and the playlists you added.
- 3) Music files in the selected playlists are displayed in the file list area.

### ■ Add playlist

- 1) Click the **My Computer** or **Connected device** icon to open the window.
- 2) Click the **Add playlist** button at the top of the playlist area.
- 3) A new playlist is created at the bottom of the area.

### ■ Rename playlist

- 1) Click the **My Computer** or **Connected device** icon to open the window.
- 2) Select a playlist to rename.
- 3) Click the **Rename playlist** button at the top of the playlist area.
- 4) Enter a new name in the name field and click on an empty area in the file list.

### ■ Delete playlist

- 1) Click the **My Computer** or **Connected device** icon to open the window.
- 2) Select a playlist to delete.
- 3) Click the **Delete playlist** button at the top of the playlist area.
- 4) The playlist is deleted.

## 04 Basic description

### 4.2. My Computer

#### Overview

You can manage PC folders and files through My Computer.

Click the My Computer icon to open a window showing the current PC folders and file list. For details about file management, see [\[4.1. Managing files\]](#).

## 04 Basic description

### 4.3. Connected device

#### Overview

You can manage PC folders and files through Connected device.

Click the Connected device icon to open a window showing the current PC folders and file list. For details about file management, see [\[4.1. Managing files\]](#).

## 04 Basic description

### 4.4. Searching for a device

#### Overview

You can retrieve a new device and connect it so that you can use it in Samsung New PC Studio.  
If the USB cable is connected, Samsung New PC Studio will automatically connect to the new device without going through the retrieval process.

\* Connection support functions may differ depending on the country setting or mobile phone OS that you select during installation.

#### Searching for a device via USB / Search for a serial device

- 1) Click the **Search for device** icon on the top right of Samsung New PC Studio.
- 2) The Search for device pop-up window appears, showing the list of devices retrieved.
- 3) Select a device you want to connect to and click the **Connect** button.
- 4) When the "Connecting device..." message appears and connection is successfully made, the device icon connected to the stage will appear.

#### Searching device via Bluetooth

- 1) Turn Bluetooth on from the device you want to connect, and ensure that Visibility status is Enabled.
- 2) Turn on your computer's Bluetooth device.
- 3) Click **Search** from the **Search for device** menu.
- 4) Select a device you want to connect and click the **Connect** button.
- 5) If it is the device's first connection,
  - ▶ Enter any number in the input box according to the instruction and then enter the same number in the device.
  - ▶ Click the **OK** button.
  - ▶ When the Accept Connection message appears in the device, accept the connection.
- 6) The connection is complete.

\* Outline of device connection types

Type of Device	Information
USB / Serial	Connect your mobile phone to the computer with a data cable.
Bluetooth	Enable the Bluetooth visibility of the device you want to connect.

## 04 Basic description

### 4.5. Launcher - Toolbox

#### Overview

Toolbox allows you to open and close various applications in Stage. You can configure a stage as needed through Toolbox.

For information about Stage, see [\[4.6 . Launcher - Stage Navigator\]](#).

\* Some programs require a connection to the device.

\* Executable programs may differ depending on the functionality of the connected device.

#### ■ Opening an application in a stage

1) Open the Toolbox window by clicking the **Toolbox** icon in Launcher.

2) To open an application in a stage, execute one of the following:

- ▶ Drag and drop the application icon from Toolbox to the stage.
- ▶ Click the application icon.

#### ■ Closing an application in a stage

To close a program on the stage, click the Close button on the stage.

## 04 Basic description

### 4.6. Launcher - Stage Navigator

#### Overview

A stage can have several applications, and allows you to change names and skins. In a stage, previous settings such as an application configuration location and a running application, etc., are automatically saved after use. The Basic stage provided at the time of the Samsung New PC Studio installation allows you to use Samsung New PC Studio efficiently, as it has applications related to the stage title. Click a stage icon to move to the corresponding stage. Stage navigator is a grouping of stages. It is the area where stages are gathered at the bottom of the screen.

#### Changing stage properties

You can change properties such as Stage title, Transparency, and Change skin. To change the stage properties, execute one of the following:

##### ■ Using the bottom area of stage

- 1) Select the bottom area of a stage and right-click on it.
- 2) Click **Stage settings** on the menu.
- 3) After modifying the desired property in the pop-up window, click the **OK** button to finish.

##### ■ Using the icon in Launcher

- 1) Click the **Settings** icon in Launcher.
- 2) Click the **Stage** tab in the pop-up window.
- 3) Select the stage to configure and modify the desired property, and then click the **OK** button to finish.

#### Deleting a stage

- 1) Right-click on the bottom of the stage.
- 2) When the menu appears, click **Delete stage**.
- 3) Then click the **OK** button from the Delete confirmation pop-up window to finish.

#### Initializing entire stage

You can initialize or delete according to the type of stage. You may only initialize the Basic stage, and delete a stage added through User stage or Update.

- 1) Select the appropriate stage bottom area and right-click on it.
- 2) Click **Initialize entire stage** on the menu.
- 3) Click the **OK** button from the pop-up window, and the entire stage will be initialized.



## 04 Basic description

### 4.7. Launcher - User stage

#### Overview

User stage is a stage in which users can place applications according to their needs. When executed, an empty stage is created. Users can create a stage according to their needs by opening Toolbox applications in this stage. For information about Toolbox, see [\[4.5. Launcher Toolbox\]](#).

#### Creating a user stage

- 1) Click the **Add user stage** icon in Launcher.
- 2) Enter the name of the stage to create in the stage pop-up window and click the **OK** button. A new stage icon is created in Stage navigator.
- 3) Click the **New stage** icon and execute Toolbox to define the stage according to your needs.

## 04 Basic description

### 4.8. Launcher - Update

#### Overview

Samsung New PC Studio Update provides improved functions through the latest application version updates. In addition, you can install a newly added stage, provided that an update of the application to add is automatically executed in Toolbox.

#### Updating Samsung New PC Studio

- 1) Click the **Update** icon in Launcher.
- 2) Click the **Update** button next to the detailed information of Samsung New PC Studio Update.
- 3) After the completion of an update, click the **OK** button to finish the update.

## 04 Basic description

### 4.9. Launcher - Device update

#### Overview

Device update allows users to update mobile phone software to the latest version when there are functional improvements without having to go to the service center.

Please read the warnings below thoroughly before using Device update.

#### Warnings

- 1) Be sure to back up critical data stored on your mobile phone before updating it.
- 2) Be sure to keep the cable connected to the mobile phone while device update is in progress. Disconnecting the cable may cause a fatal error.
- 3) Keep your mobile phone cover open and avoid pressing any buttons while Device update is in progress.
- 4) Do not run Device update when the Internet connection is unstable. Otherwise, the update may terminate.
- 5) Sufficient memory and CPU resources are required to properly run Device update. Exit other applications running on the PC while Device update is in progress.
- 6) Be sure to run Device update when the battery is full. Device update may run from 10 minutes to 1 hour, depending on battery capacity. If the battery is running low while Device update is in progress, a fatal error may occur.
- 7) Do not reboot your PC and mobile phone while Device update is in progress, otherwise it may cause a fatal error.

#### Execute Device update

- 1) Click the **Update** icon in the Launcher.
- 2) Click the **Device update** tab in the Update window.
- 3) Selecting a model you want to update will display if the model requires an update (the mobile phone will need to be connected first).
- 4) When an update is needed, click the **Update** button to display the '**Device update wizard**'.

#### Device update wizard

Follow the steps below to use Device update wizard. If any issues should arise, please follow the messages displayed on the screen.

##### Step 1) Warnings

- This step provides warnings about Device update. Read the warnings thoroughly, click the  I have read all of the information  tick box at the bottom, and click the **Next** button.

##### Step 2) Binary download

- In this step, the binary files required for device update are downloaded from the update server. This step is executed automatically and goes on to the next step.

##### Step 3) Execute Device update

- In this step, the binary files are used to upgrade the mobile phone. This step is also executed automatically. After this step, the mobile phone is rebooted and the next step begins.

##### Step 4) Finish Device update

- In this step, Device update is complete. Click the **Finish** button to complete Device update.

#### Restore mode

If you disconnect your mobile phone or an error occurs while device update is in progress, the mobile phone may not work properly. In this case, you can use restore mode to restore your mobile phone. If the phone is not restored fully in restore mode, contact the nearest Samsung Electronics service centre for assistance.

#### Execute Restore mode

- 1) If an error occurs while device update is running, the screen is changed to prompt you to execute Restore mode. Select Restore mode and click the **Next** button to run Restore mode.
- 2) Even though you may choose not to run Restore mode and finish an update after an error occurs, you can execute Restore mode anytime by executing Device update in New PC Studio and follow the steps below.
  - If a message at the bottom of the Device update window indicates that restore is needed, click the **Details** button to execute Restore mode.
- 3) A screen where you can select a mobile phone model to restore will appear. All mobile phone models you have failed to update are listed on the screen. Select a model to restore and click the **Restore** button.

### **Device update wizard (Restore mode)**

Follow the steps below to use Device update wizard (Restore mode). If any issues should arise, please follow the messages displayed on the screen.

#### **Step 1) Warnings**

- This step provides warnings about restore. Read the warnings thoroughly, click the  I have read all of the information tick box at the bottom and click the **Next** button.

#### **Step 2) Change mobile phone to Restore mode**

- This step tells you how to change your mobile phone to Restore mode. Follow the instructions to change the phone to restore mode and click the **Restore** button to move to the next step.

#### **Step 3) Execute Restore mode**

- In this step, the mobile phone is restored. This step is executed automatically. After this step, the mobile phone is rebooted and the next step begins.

#### **Step 4) Finish Restore mode**

- In this step, Restore mode is complete. Click the **Finish** button to complete restore mode.

## 04 Basic description

### 4.10. Launcher - Notify

#### Overview

Notify provides information such as updates, events, and application additions, etc. Every time new information is available, a notification pop-up window will appear at the bottom right, automatically disappearing after a few seconds.

#### Viewing Notification archive

Notification archive shows information that has not yet been viewed at a glance. If you click Notify, the following is executed according to the type of information. In the case of an event or advertisement, a new Internet Explorer window will appear, opening the corresponding website; in the case of Update and application addition, it moves to the execution phase of Samsung New PC Studio respectively.

- 1) Click the **Notify** icon in Launcher. You can see the information details in the Notification archive pop-up window.
- 2) To execute Notify, double-click the corresponding item.
- 3) To finish, click the **Close** button.

## 04 Basic description

### 4.11. Launcher - Settings

#### Overview

This section covers how you can set the general parameters and properties of Stage in Samsung New PC Studio.

#### General settings

- 1) Click the **Settings** icon in Launcher.
- 2) Select the desired settings from the **General** tab after referring to the following description and click the **OK** button.

General	Description
Select country	Checks the country option you set during the installation of Samsung New PC Studio. Removal and reinstallation of the program is required in order to change the country setting.
Select language	Samsung New PC Studio application language is changed to a set language.
Sound effects	Samsung New PC Studio sound effects are turned on or off.
My device	Manages devices connected to Samsung New PC Studio.
Reset all stages	Resets all stages of Samsung New PC Studio.

#### Stage settings

- 1) Click the **Settings** icon in Launcher.
- 2) Click the **Stage** tab.
- 3) Select the stage to set using the **Stage** combo box.
- 4) Change the setting referring to the information below, and click the **OK** button.

Stage	Description
Stage Title	Changes the stage title.
Background color	Click the desired color to use as a background color.
Background Image	Click the '+' button on the desired image to import it as a background image.
Background transparency	Adjusts background color or image transparency.
Apply the set background to all stages	Applies the current value to all stages.

#### Option settings

- 1) Click the **Settings** icon in Launcher.
- 2) Select the desired settings from the **Option** tab after referring to the following description and click the **OK** button.

Stage	Description
Start New PC Studio automatically when Windows starts	Samsung New PC Studio starts automatically when Windows starts.
Do not open the guide	The guide does not open when Samsung New PC Studio starts.
Start device connection monitoring automatically when Windows starts	Device connection monitoring starts automatically when Windows starts.
Open New PC Studio automatically when My device is connected	Samsung New PC Studio starts automatically when a registered device is connected.

## 04 Basic description

### 4.12. Launcher - To Web

#### Overview

Samsung New PC Studio provides the To Web function, allowing users to send images, video and other multimedia files to websites easily.

You can use the To Web application in a PC connected to the Internet to register sites supporting posting and to post media files available in New PC Studio to the Web.

#### License agreement at first execution

※ In To Web, the license agreement is required because personal information, including address and phone data, may be exposed to Web service operators while using the application.

- 1) When executing To Web for the first time, clicking the **To Web** icon will display the license agreement.
- 2) When executing To Web for the first time, dragging and dropping a single or multiple files will also display the license agreement.
- 3) When executing To Web for the first time, if a user does not agree to the license agreement, the context menu of the registered site is disabled when dragging and dropping a media file, and the 'License agreement' window will appear again next time. If a user agrees to the license agreement, the window will never reappear.

#### Authenticate account

※ In To Web, the license agreement is required because personal information, including address and phone data, may be exposed to web service operators while using the application.

※ Your account can be authenticated via either New PC Studio or on a website.

##### ■ Authentication in New PC Studio

- 1) Click the **To Web** icon to display the Settings window.
- 2) Click a desired site in the website list.
- 3) Display the site's 'Authenticate account' window, and enter ID and password to log in.
- 4) Then, the "Logging in..." message pops up. When your account is authenticated in the 'To Web settings' window, the check box is displayed before the site name.
- 5) To edit the authenticated account, click the **Edit account** button and enter ID and password to log in.
- 6) Then, the "Logging in..." message pops up. When your account is checked, the check box before the site name in the 'To Web settings' window remains selected.
- 7) When your account is authenticated, the 'Delete account' and 'Edit account' buttons appear next to the site name. To edit the account, click the **Edit account** button and follow the authentication procedure in New PC Studio.
- 8) To disable the authenticated account, unselect the check box.

##### ■ Authentication on Website

- 1) Click the **To Web** icon to display the Settings window.
- 2) Click a desired site in the website list.
- 3) Display the site's 'Authenticate account' window, and click **OK** to move to the site.
- 4) Log in directly on the site.
- 5) Then, the "Logging in..." message pops up. When your account is checked, the check box before the site name in the 'To Web settings' window remains selected.
- 6) To edit the account, click the **Edit account** button and follow the authentication procedure on the site.
- 7) To disable the authenticated account, unselect the check box.

#### File web posting

- 1) Dragging and dropping a file supported by the site to the To Web icon will display the site on the context menu. Click the context menu to upload the file.
- 2) File size available for uploading is less than 10 MB. You can upload several files within the size limit.
- 3) When a drag-and-drop fails, a message will pop up. If 'Auto browsing' is selected when posting to the site in the Settings window, a drag-and-drop failure will display the site's Help.
- 4) Video size available for uploading in New PC Studio is less than 100 MB. It is recommended to upload files one by one on most sites.

## 05 Application description

### 5.1. To do

#### Overview

To do allows you to add, edit, and delete planned tasks, as well as synchronize the planned tasks saved in Samsung New PC Studio with your mobile phone and vice versa.

※ Some programs may not be available depending on the country setting.

#### Selecting field model

Enables only the fields supported by the user's mobile phone.

- 1) Connect your mobile phone to **New PC Studio**.
- 2) The combo box at the top of the application is changed to the model number and phone number of the mobile phone connected in **All fields**.
- 3) Click the **Add To do** button to check enabled fields in the edit window.

※ When you start **New PC Studio** for the first time, the fields of **To do** are set to show all the fields provided in New PC Studio.

However, even though data is entered into all the fields, the fields not supported by a mobile phone to be synchronized are excluded from synchronization.

※ Only the fields provided in the mobile phone are enabled only when it is connected to **New PC Studio** for the first time.

※ If you change the field model in **To do**, the field models of the synchronization-based applications (**Phonebook**, **Scheduler**, **To do**) are changed in the same way.

#### Adding To do

- 1) To add To Do, execute one of the following:
  - ▶ Click the **Add** icon at the bottom of To do application.
  - ▶ Double-click the blank To do list.
  - ▶ After right-clicking, click the **Add** menu item.
- 2) When the **Add To do** window appears, enter the details and click the **OK** button. The new To do is added to the To do list.

#### Editing To do

- 1) Double-click an item to edit in the To do list.
  - ※ Alternatively, right-click with the cursor on the corresponding item and click the Edit menu item.
- 2) When the **Edit To do** window appears, edit the details and click the **OK** button. To do editing is completed.

#### Deleting To do

- 1) Select an item to delete in the To do list and click the **Delete** icon at the bottom of To do application.
  - ※ Alternatively, right-click with the cursor on the corresponding item and click the Delete menu item.
- 2) When the pop-up window appears asking for confirmation of deletion, click **Yes**. To do is deleted from the list.
- 3) When you delete several items, select them with the Ctrl key held down, or put the cursor over a blank list, drag the items to delete into the list and then select them. Then click the Delete icon at the bottom of the list.

#### Completing To do

- 1) If you complete a To do, select the check box in front of the To do item.
- 2) Selecting a check box indicates that the corresponding To do is completed.

#### Importing

- 1) Click the **Import** menu item from the menu at the top of To do application.
- 2) When the **Import** window appears, click the **Next** button.
- 3) Click the **Find file** button and select the file to import and then click the **Open** button.
- 4) The file to import is registered. Click the **Next** button.
- 5) The registered To do file will begin importing into Samsung New PC Studio. When the import is completed, the **Finish** button will be activated.
- 6) Click the **Finish** button to close the window and add the imported New PC Studio To do file to the To do list.
  - ※ Import support format: NPF



## Exporting

- 1) Click the **Export** menu item from the menu at the top of To do application.
- 2) When the **Export** window appears, click the **Next** button.
- 3) Click the **Find location** button and select the appropriate location and then click the **Save** button.
- 4) The appropriate location is registered. Click the **Next** button.
- 5) The To do file will begin exporting to My Computer. When the export is completed, the **Finish** button will be activated.
- 6) Click the **Finish** button to close the window and create the To do file in the designated location.

※ Export support format: NPF

## Synchronization

Newly added data is synchronized, edited and deleted by comparing data between Samsung New PC Studio's To do application and your mobile phone's To do application.

### ■ Executing synchronization

- 1) Click the **Sync** icon at the bottom of **To do**.
- 2) Check the data that might be lost during synchronization in the field comparison window.
- 3) Check if any data is lost. If there are no problems, click the **OK** button.
- 4) The Sync window appears, the mobile phone is connected and the synchronization process starts.
- 5) After the synchronization is complete, the Sync window disappears.

### ■ Resolve synchronization conflict

conflict may occur in synchronization when the same data in the application and in the mobile phone has been altered. By selecting which data to apply, synchronization can be resumed through the synchronization conflict pop-up window.

- 1) When the synchronization conflict pop-up window appears, check the data changed in each device, and select by clicking the item to synchronize.
  - 2) Press the **Sync** button to synchronize the data with the selected item.
- ※ If the same synchronized data is deleted from New PC Studio and modified in the device, the data will be added to New PC Studio. If the data is deleted from the device and modified in New PC Studio, the data will be deleted from New PC Studio.

### ■ Check sync data

The fields not supported by a mobile phone to be synchronized are excluded from synchronization and only other data is synchronized.

### ■ Stop Sync

If you click the Stop button during synchronisation, synchronisation will halt.

### ■ Outlook synchronization

- 1) Click the **Sync settings** menu item from the menu at the top of To do application.
- 2) Select the check box in front of the '**Sync between Outlook and To do**' item.
- 3) When synchronization is executed according to the synchronization setting, Outlook is also synchronized.

### ■ If several mobile phones are connected

- 1) Click the **Sync settings** menu item from the menu at the top of To do application.
- 2) Click **OK** after selecting the mobile phones to synchronize from the list of connected phones.

## 05 Application description

### 5.2. Phonebook

#### Overview

Phonebook allows you to add, edit, and delete contacts and groups, and to synchronize the contacts saved in Samsung New PC Studio with your mobile phone and vice versa.

※ Some programs may not be available depending on the country setting.

#### Selecting field model

Enables only the fields supported by the user's mobile phone.

- 1) Connect your mobile phone to **New PC Studio**.
- 2) The combo box at the top of the application is changed to the model number and phone number of the mobile phone connected in **All fields**.
- 3) Click the **Add contact** button to check enabled fields in the edit window.

※ When you start **New PC Studio** for the first time, the fields of **Phonebook** are set to show all the fields provided in New PC Studio.

However, even though data is entered into all the fields, the fields not supported by a mobile phone to be synchronized are excluded from synchronization.

※ Only the fields provided in the mobile phone are enabled only when it is connected to **New PC Studio** for the first time.

※ If you change the field model in **Phonebook**, the field models of the synchronization-based applications (**Phonebook**, **Scheduler**, **To do**) are changed in the same way.

#### Adding contact

- 1) Click the **Add** icon at the bottom of Phonebook application.
  - ※ Alternatively, double-click a blank contact list or right-click and click the Add menu item.
- 2) When the Add contact window appears, enter the details and click the **OK** button. New contacts will be added to the list.

#### Photo registration

- 1) Right-click on the photo registration in the Add contact window.
- 2) Select the location of the photo to search for. (The location will display My Computer and Connected mobile phone.)
- 3) Search for the photo, select it and then click the **Open** button to register it.
  - ※ Alternatively, drag and drop the image to register in the **Add contact** window to register it.
  - ※ Photo registration support format: \*.BMP, \*.JPG, \*.JPEG, \*.PNG, \*.GIF, \*.WBMP, \*.TIF

#### Editing contact

- 1) Double-click an item to edit in the contact list.
  - ※ Alternatively, right-click with the cursor on the corresponding item and click the **Edit** menu item.
- 2) When the **Edit contact** window appears, edit the details and click the **OK** button. Contact editing is then completed.

#### Deleting contact

- 1) Select an item to delete in the contact list and click the **Delete** icon at the bottom of Phonebook application.
  - ※ Alternatively, right-click with the cursor on the corresponding item and click the **Delete** menu item.
- 2) When the pop-up window appears asking for confirmation of deletion, click **Yes**. The contact is then deleted from the list.
- 3) When you delete several items, select them with the **Ctrl** key held down or put the cursor over a blank list and drag the items to delete into the list, and then select them. Then, click the **Delete** icon at the bottom of the list.

#### Adding group

- 1) Click the **Add group** icon at the bottom of Phonebook application.
  - ※ Alternatively, right-click with the cursor on the group item in contact list and click the **Add group** menu item.
- 2) When the 'Add group' window appears, enter the content as needed and click the **OK** button to add the group to the list.
- 3) Then, click on the contact list or a blank list to complete Add group.

## Renaming group

- 1) After right-clicking with the cursor on the group to rename, click the **Rename group** menu item.
- 2) When the 'Edit group' window appears, edit the content as needed and click the **OK** button to edit the group.
- 3) Then, click on the contact list or a blank list to complete Rename group.

## Deleting group

- 1) Select the group to delete and click the **Delete** icon at the bottom of Phonebook application.
  - ※ Alternatively, right-click with the cursor on the group to delete and click the **Delete group** menu item.
- 2) When the pop-up window appears asking for confirmation of deletion, click **Yes**. All of the contacts in the group are changed to Undefined group and the group is deleted.

## Importing

### ■ Importing a vCard file

- 1) Click the **Import** menu item from Menu at the top of Phonebook application.
- 2) When the Import window appears, select the '**Import standard vCard file into Phonebook folder**' item and click the **Next** button.
- 3) Click the **Find file** button and select the vCard file to import, and then click the **Open** button.
- 4) The file to import is registered. Click the **Next** button.
- 5) The registered vCard file begins importing into Phonebook. When the import is completed, the **Finish** button will be activated.
- 6) Click the **Finish** button to close the window and add the imported vCard file to the contact list.
  - ※ Import vCard file support format: \*.VCF

### ■ Importing a Phonebook contact file

- 1) Click the **Import** menu item on the Menu at the top of Phonebook application.
- 2) When the Import window appears, select the '**Import contact file into Phonebook folder**' item and click the **Next** button.
- 3) Click the **Find file** button and select the contact file to import, and then click the **Open** button.
- 4) The file to import is registered. Click the **Next** button.
- 5) The registered contact file begins importing into Phonebook. When the import is completed, the **Finish** button will be activated.
- 6) Click the **Finish** button to close the window and add the imported contact file to the contact file list.
  - ※ Import contact file support format: \*.npf, \*.lef, \*.wab, \*.mdb

### ■ Import CSV file

- 1) Click **Import** on the **Menu** at the top of the **Phonebook**.
- 2) When the **Import** window appears, click '**Import a contact file into the Phonebook folder.**' Click the **Next** button.
- 3) Click the **Browse** button to select a CSV file and click the **Open** button.
- 4) The file to import is then added. Click the **CSV setting** button when it appears.
- 5) Select an **encoding method** and **separator** to use, and then click **OK**.
- 6) When the **Field mapping** window appears, match the fields of the file you want to import into the Phonebook. Click the **OK** button.
  - ※ You don't need a field mapping for CSV files exported from **New PC Studio**.
  - ※ For CSV files not exported from **New PC Studio**, you must select a phone number type supported by **New PC Studio** (e.g. **Type: Mobile phone**) from the list.Files for which you didn't set a phone number type are all saved as "Others".
- 7) When the field mapping completes, click the **OK** button.
- 8) The CSV file will begin importing into the computer. When the task completes, the **Finish** button is activated.
- 9) Click the **Finish** button to close the window, and the CSV file will be added to the contact list.
  - ※ File formats supported in Import CSV file: \*. csv

## Exporting

### ■ Exporting to a vCard file

- 1) Click the **Export** menu item from Menu at the top of Phonebook application.
- 2) When the Export window appears, select the radio button of the '**Export Phonebook contact to standard vCard file**' item and click the **Next** button.
- 3) Select a folder to export by clicking the **Find folder** button and click the **Save** button.
- 4) The folder to export is registered. Click the **Next** button.
- 5) The vCard file begins exporting to My Computer. When the export is completed, the **Finish** button will be activated.
- 6) Click the **Finish** button to close the window and create the vCard file in the designated folder.
  - ※ Export vCard file support format: \*.VCF

#### ■ Exporting to a Phonebook contact file

- 1) Click the **Export** menu item from Menu at the top of Phonebook application.
  - 2) When the Export window appears, select the radio button of the '**Export New PC Studio contact to the file**' item and click the **Next** button.
  - 3) Click the **Find location** button and select the appropriate location, and then click the **Save** button.
  - 4) The appropriate location is registered. Click the **Next** button.
  - 5) The contact file begins exporting to My Computer. When the export is completed, the **Finish** button will be activated.
  - 6) Click the **Finish** button to close the window and create the contact file in the designated location.
- ※ Export contact file support format: \*.NPF

#### ■ Export CSV file

- 1) Click **Export** on the **Menu** at the top of the **Phonebook**.
  - 2) When the Export window appears, select the radio button of the '**Export New PC Studio contact to the file**' item and click the **Next** button.
  - 3) Click the **Browse** button to select a CSV file and click the **Open** button.
  - 4) The destination path is then added. Click the **CSV setting** button when it appears.
  - 5) Select an **encoding method** and **separator** to use, and then click **OK**.
  - 6) The CSV file will begin exporting from the computer. When the task completes, the **Finish** button is activated.
  - 7) Click the **Finish** button to close the window, and the CSV file will be created at the specified path..
- ※ File formats supported in Export CSV file: \*.csv

### Synchronization

Newly added data is synchronized, edited, and/or deleted by comparing data between the contacts of New PC Studio and those of your mobile phone.

#### ■ Executing synchronization

**Click the Sync** icon at the bottom of Phonebook.

- 2) Check the data that might be lost during synchronization in the field comparison window.
- 3) Check if any data is lost. If there are no problems, click the **OK** button.
- 4) The Sync window appears, the mobile phone is connected and the synchronization process starts.
- 5) After the synchronization is complete, the Sync window disappears.

#### ■ Resolve synchronization conflict

conflict may occur in synchronization when the same data in the application and the mobile phone has been altered. By selecting which data to apply, synchronization can be resumed through the synchronization conflict pop-up window.

- 1) When the synchronization conflict pop-up window appears, check the data changed in each device, and select by clicking the item to synchronize.
  - 2) Press the Sync button to synchronize the data with the selected item.
- ※ If the same synchronized data is deleted from New PC Studio and modified in the device, the data will be added to New PC Studio. If the data is deleted from the device and modified in New PC Studio, the data will be deleted from New PC Studio.

#### ■ Check sync data

The fields not supported by a mobile phone to be synchronized are excluded from synchronization and only other data is synchronized.

#### ■ Stop Sync

If you click the **Stop** button during synchronisation, synchronisation will halt.

#### ■ Outlook synchronisation

- 1) Click the **Sync settings** menu item from the menu at the top of Phonebook application.
- 2) Select the blank confirmation form for the '**Sync between Outlook and Phonebook**' item.
- 3) When synchronisation is executed according to the synchronisation setting, Outlook is also synchronised.

#### ■ If several mobile phones are connected

Select the mobile phone to synchronize from the mobile phones connected in the pop-up Synchronization Option window.

- 1) Click the **Sync settings** menu item from the menu at the top of Phonebook application.
- 2) Click OK after selecting the mobile phones to synchronise from the list of connected phones.

## 05 Application description

### 5.3. Memo

#### Overview

Memo application allows you to add, edit, and delete memos, as well as synchronize the memos saved in Samsung New PC Studio with your mobile phone and vice versa.

※ Some programs may not be available depending on the country setting.

#### Adding memo

1) To add Memo, execute one of the following:

- ▶ Click the **Add** icon at the bottom of Memo application.
- ▶ Double-click the blank Memo list.
- ▶ After right-clicking, click the **Add** menu item.

2) When the Add memo window appears, enter the details and click the **OK** button. The new memo is added to the Memo list.

#### Editing memo

1) Double-click an item to edit in the Memo list.

※ Alternatively, right-click with the cursor on the corresponding item and click the **Edit** menu item.

2) When the Edit memo window appears, edit the details and click the **OK** button. Memo editing is completed.

#### Deleting memo

1) Select an item to delete in the Memo list, and then click the **Delete** icon at the bottom of the list.

※ Alternatively, right-click with the cursor on the corresponding item and click the **Delete** menu item.

2) When the pop-up window appears asking for confirmation of deletion, click **Yes**. The Memo is deleted from the list.

3) When you delete several items, select several items with the **Ctrl** key held down, and click the **Delete** icon at the bottom of the list.

#### Importing

1) Click the **Import** menu item from the menu at the top of Memo application.

2) When the **Import** window appears, click the **Next** button.

3) Click the **Find file** button and select the file to import, and then click the **Open** button.

4) Click the **Next** button.

5) The registered Samsung New PC Studio Memo file begins importing into New PC Studio Memo. When the import is completed, the **Finish** button will be activated.

6) Click the **Finish** button to close the window and add the imported Memo file to the Memo list.

※ Import memo file support format: \*.NMF, \*.DIF

#### Exporting

1) Click the **Export** menu item from the menu at the top of Memo application.

2) When the Export window appears, click the **Next** button.

3) Click the **Find location** button and select the appropriate location, and then click the **Save** button.

4) The appropriate location is registered. Click the **Next** button.

5) The Samsung New PC Studio Memo file begins exporting to My Computer. When the export is completed, the **Finish** button will be activated.

6) Click the **Finish** button to close the window and create the exported Memo file in the designated location.

※ Export memo file support format: \*.NMF

#### Synchronization

Newly added data is synchronized, edited, and/or deleted by comparing data between Samsung New PC Studio's Memo application and your mobile phone's Memo application.

##### ■ Synchronize

1) Click the **Synchronization** icon at the bottom of Memo application.

2) The synchronization window appears and synchronization starts with your mobile phone connected.

3) When synchronization is completed, the Synchronization window is automatically closed after two seconds.

##### ■ Resolve synchronization conflict

A conflict may occur in synchronization when the same data in the application and the mobile phone has been altered.

By selecting which data to apply, synchronization can be resumed through the synchronization conflict pop-up window.

1) When the synchronization conflict pop-up window appears, check the data changed in each device, and select by clicking the item to synchronize.

2) Press the Sync button to synchronize the data with the selected item.

※ If the same synchronized data is deleted from New PC Studio and modified in the device, the data will be added to New PC Studio. If the data is deleted from the device and modified in New PC Studio, the data will be deleted from New PC Studio.

#### ■ **Stop Sync**

If you click the Stop button during synchronization, synchronization will halt.

#### ■ **Outlook synchronization**

1) Click the **Sync settings** menu item from the menu at the top of Memo application.

2) Select the blank confirmation form for the Sync between Outlook and Memo item.

3) When synchronization is executed according to the synchronization setting, Outlook is also synchronized.

#### ■ **If several mobile phones are connected**

1) Click the **Sync settings** menu item from the menu at the top of Memo application.

2) Click OK after selecting the mobile phones to synchronize from the list of connected phones.

## 05 Application description

### 5.4. Scheduler

#### Overview

With Schedule, you can add, edit or delete a schedule, and synchronize the schedules stored in the mobile phone with Samsung New PC Studio.

※ Some programs may not be available depending on the country setting.

#### Selecting field model

Enables only the fields supported by the user's mobile phone.

- 1) Connect your mobile phone to **New PC Studio**.
- 2) The combo box at the top of Scheduler is changed to the model number and phone number of the mobile phone connected in **All fields**.
- 3) Click the **Add schedule** button to check enabled fields in the edit window.

※ When you start **New PC Studio** for the first time, the fields of **Scheduler** are set to show all the fields provided in New PC Studio.

However, even though data is entered into all the fields, the fields not supported by a mobile phone to be synchronized are excluded from synchronization.

※ Only the fields provided in the mobile phone are enabled only when it is connected to **New PC Studio** for the first time.

※ If you change the field model in **Scheduler**, the field models of the synchronization-based applications (**Phonebook, Scheduler, To do**) are changed in the same way.

#### Adding Schedule

##### ■ Monthly View

- 1) To add a schedule, execute one of the following:
  - ▶ After selecting the date in which the schedule is to be added, click the **Add** icon at the bottom of Scheduler application.
  - ▶ Double-click the date in which the schedule is to be added.
  - ▶ After right-clicking, click the **Add** menu item.
- 2) When the **Add schedule** window appears, enter the details and click the **OK** button to add the schedule.

##### ■ Weekly View

- 1) To add a schedule, execute one of the following:
  - ▶ After selecting the time or the date in which schedule is to be added, click the **Add** icon at the bottom of Scheduler application.
  - ▶ Double-click the time or the date in which schedule is to be added.
  - ▶ After right-clicking, click the **Add** menu item.
- 2) When the **Add schedule** window appears, enter the details and click the **OK** button to add the schedule.

##### ■ Overall View

- 1) To add a schedule, execute one of the following:
  - ▶ Click the **Add** icon at the bottom of Scheduler application.
  - ▶ Double-click a blank Schedule list.
  - ▶ After right-clicking, click the **Add** menu item.
- 2) When the **Add schedule** window appears, enter the details and click the **OK** button to add the schedule.

#### Editing Schedule

- 1) Double-click an item to edit in the Schedule list.
  - ※ Alternatively, right-click with the cursor on the corresponding item and click the **Edit schedule** menu item.
- 2) When the **Edit schedule** window appears, edit the details and click the **OK** button. Schedule editing is then completed.

#### Deleting Schedule

- 1) Select an item to delete in the Schedule list and click the **Delete** icon at the bottom of the list.
  - ※ Alternatively, right-click with the cursor on the corresponding item and click the **Delete** menu item.

- 2) When the pop-up window appears asking for confirmation of deletion, click **Yes**. The schedule is deleted from the list.
- 3) When you delete several items, select them while holding the Ctrl key down, and click the Delete icon at the bottom of the list.

## Updating Schedule date/time


### ■ Monthly View

If you select an item to change from the Schedule list and drag it to the appropriate date, the schedule is updated.

### ■ Weekly View

If you select an item to change from the Schedule list and drag it to the appropriate date and time, the schedule is updated.

## Expired Schedule list

If you click the  icon showing an expired schedule from the Schedule list, the Expired schedule list appears.

### ■ Editing Expired schedule

- 1) Double-click an item to edit from the Expired schedule list.
- 2) When the **Edit schedule** window appears, edit the details and click the **OK** button to complete schedule editing.

### ■ Deleting Expired schedule

- 1) Select an item to delete in the Expired schedule list and click the Delete icon at the bottom of the list.
- 2) The schedule is deleted.

### ■ Updating Expired schedule date/time

- 1) If you drag an item to change from the Expired schedule list in Monthly view to the appropriate date, the schedule is updated.
- 2) If you drag an item to change from the Expired schedule list in Weekly view to the appropriate date and time, the schedule is updated.

## Importing

### ■ Importing a vCalendar file

- 1) Click the **Import** menu item from the menu at the top of Scheduler application.
  - 2) When the **Import** window appears, select the '**Import standard vCalendar file into Schedule folder**' item and click the **Next** button.
  - 3) Click the **Find file** button and select the file to import, and then click the **Open** button.
  - 4) The file to import is registered. Click the **Next** button.
  - 5) The registered vCalendar file begins importing into Calendar. When the import is completed, the **Finish** button will be activated.
  - 6) Click the **Finish** button to close the window and add the imported vCalendar file to the schedule list.
- ※ Import vCalendar file support format: \*.VCS

### ■ Importing a schedule file

- 1) Click the **Import** menu item from the menu at the top of Scheduler application.
  - 2) When the Import window appears, select the '**Import schedule file into Schedule folder**' item and click the **Next** button.
  - 3) Click the **Find file** button and select the file to import, and then click the **Open** button.
  - 4) The file to import is registered. Click the **Next** button.
  - 5) The registered schedule file begins importing. When the import is completed, the **Finish** button will be activated.
  - 6) Click the **Finish** button to close the window and add the imported schedule file to the schedule list.
- ※ Import schedule file support format: \*.NSF, \*.DIF

## Exporting

### ■ Exporting to a vCalendar file

- 1) Click the **Export** menu item from the menu at the top of Scheduler application.
- 2) When the Export window appears, select the '**Export schedule to standard vCalendar file**' item and click the **Next** button.
- 3) Select a folder to export by clicking the **Find folder** button, and then click the **Save** button.
- 4) The folder to export is registered. Click the **Next** button.
- 5) The schedule file begins exporting to My Computer. When the export is completed, the **Finish** button will be activated.



6) Click the Finish button to close the window and create the vCalendar file in the designated folder.

※ Export vCalendar file support format: \*.VCS

#### ■ Exporting to a schedule file

1) Click the **Export** menu item from the menu at the top of Scheduler application.

2) When the **Export** window appears, select the radio button of the '**Export schedule information to schedule file format**' item and click the **Next** button.

3) Click the **Find location** button and select the appropriate location, and then click the **Save** button.

4) The appropriate location is registered. Click the **Next** button.

5) The schedule file begins exporting to My Computer. When the export is completed, the **Finish** button will be activated.

6) Click the Finish button to close the window and create the schedule file in the designated location.

※ Export schedule file support format: \*.NSF

## Synchronization

Newly added data is synchronized, edited, and/or deleted by comparing data between Samsung New PC Studio's schedules and your mobile phone's schedules.

#### ■ Executing synchronization

1) Click the **Sync** icon at the bottom of **Scheduler**.

2) Check the data that might be lost during synchronization in the field comparison window.

3) Check if any data is lost. If there are no problems, click the **OK** button.

4) The Sync window appears, the mobile phone is connected and the synchronization process starts.

5) After the synchronization is complete, the Sync window disappears.

#### ■ Resolve synchronisation conflict

A conflict may occur in synchronisation when the same data in the application and the mobile phone has been altered. By selecting which data to apply, synchronisation can be resumed through the synchronisation conflict pop-up window.

1) When the synchronisation conflict pop-up window appears, check the data changed in each device, and select by clicking the item to synchronise.

2) Press the **Sync** button to synchronise the data with the selected item.

※ If the same synchronized data is deleted from New PC Studio and modified in the device, the data will be added to New PC Studio. If the data is deleted from the device and modified in New PC Studio, the data will be deleted from New PC Studio.

#### ■ Check sync data

The fields not supported by a mobile phone to be synchronized are excluded from synchronization and only other data is synchronized.

#### ■ Stop Sync

If you click the Stop button during synchronisation, synchronisation will halt.

#### ■ Outlook synchronisation

1) Click the **Sync settings** menu item from the menu at the top of Scheduler application.

2) Select the blank confirmation form for the '**Sync between Outlook and Scheduler**' item.

3) When synchronisation is executed according to the synchronisation setting, Outlook is also synchronised.

#### ■ If several mobile phones are connected

1) Click the **Sync settings** menu item from the menu at the top of Scheduler application.

2) Click OK after selecting the mobile phones to synchronise from the list of connected phones.

## 05 Application description

### 5.5. D-Day

#### Overview

With D-Day, you can add, edit or delete a d-day, as well as synchronize the d-days stored in the mobile phone with Samsung New PC Studio.

※ Some programs may not be available depending on the country setting.

#### Selecting field model

Enables only the fields supported by the user's mobile phone.

- 1) Connect your mobile phone to **New PC Studio**.
- 2) The combo box at the top of **D-Day** is changed to the model number and phone number of the mobile phone connected in **All fields**.
- 3) Click the **Add D-Day** button to check enabled fields in the edit window.

※ When you start **New PC Studio** for the first time, the fields of **D-Day** are set to show all the fields provided in New PC Studio.

However, even though data is entered into all the fields, the fields not supported by a mobile phone to be synchronized are excluded from synchronization.

※ Only the fields provided in the mobile phone are enabled only when it is connected to **New PC Studio** for the first time.

※ If you change the field model in **D-Day**, the field models of all the synchronization-based applications (**Phonebook, Scheduler, To do**) except **Memo** are changed in the same way.

#### Adding D-Day

- 1) To add a D-Day, execute one of the following:
  - ▶ Click the **Add** icon at the bottom of D-Day application.
  - ▶ Double-click the blank D-Day list.
  - ▶ After right-clicking, click the **Add** menu item.
- 2) When the Add D-Day window appears, enter the details and click the OK button. The new D-Day is added to the D-Day list.

#### Editing D-Day

- 1) Double-click an item to edit in the D-Day list.
  - ※ Alternatively, right-click with the cursor on the corresponding item and click the **Edit** menu item.
- 2) When the Edit D-Day window appears, edit the details and click the OK button. D-Day editing is completed.

#### Deleting D-Day

- 1) Select an item to delete in the D-Day list and click the **Delete** icon at the bottom of the list.
  - ※ Alternatively, right-click with the cursor on the corresponding item and click the **Delete** menu item.
- 2) When the pop-up window appears asking for confirmation of deletion, click Yes. D-Day is deleted from the list.
- 3) When you delete several items, select them with the Ctrl key held down, or put the cursor over a blank list and drag the items to delete into the list, and then select them. Then, click the Delete icon at the bottom of the list.

#### Import

- 1) Click **Import** on the **menu** at the top of D-DAY.
- 2) When the Import window appears, click Next.
- 3) Click Find File, select the file to import and then click **Open**.
- 4) Click **Next**.
- 5) The registered memo file will be imported into **Samsung New PC Studio** D-DAY. When the operation is finished, the **Finish** button will be active.
- 6) Click **Finish** to close the window. The imported memo file will be added to the D-DAY list.
  - ※ Supported D-DAY files that can be imported: \*.NAF, \*.DIF

#### Export

- 1) Click Export on the menu at the top of D-DAY.
- 2) When the Export window appears, click Next.
- 3) Click Find Location, select the appropriate location and then click Save.

- 4) The path to be exported has been registered. Click Next.
  - 5) The Samsung New PC Studio D-DAY file will be exported from My Computer. When the operation is finished, the Finish button will be active.
  - 6) Click Finish to close the window. The D-DAY file will be created in the specified location.
- \* Supported D-DAY files that can be exported: \*.NAF

## 05 Application description

### 5.6. Music player

#### Overview

Music player supports various music files formats, including music files and recorded sound files supported by Samsung mobile phones and MP3s.

※ Support format: MP3, OGG, WMA, ASF(Sound Only), 3GP(Sound Only), WAV, AMR, AAC, M4A, MMK, MID(MIDI), QCP, PMD, MP4(Sound Only)

※ Some programs may not be available depending on the country setting.

#### Configuring application

1) **Menu Button** <Quick Run: F10>

▶ Displays Open, Player settings, and Version information.

2) **Music Information Window**

▶ Displays the title, artist, album art, and rating of the music file being played.

▶ If you click the Music information window, the window is zoomed in, and detailed information (album information, file information) is displayed.

▶ The album art whose music is being played can be immediately set up by dragging the image file onto the player.

3) **Repetition Settings**

▶ Selects a repetition play format.

▶ No repetition, Repeat entire track, Repeat selected track.

4) **Shuffle Settings**

▶ Plays tracks in the playlist at random and sets Shuffle type.

▶ Shuffle, No shuffle.

5) **Play Status**

▶ Displays the current Play status (Current playtime/Total playtime) on the Play button.

▶ You can search music by dragging a mouse on the circle while holding down the left mouse button.

6) **Previous Button** <Quick Run: [←], [z]>

▶ Plays the previous item on Playlist.

7) **Play/Pause Button** < Quick Run: [space], [x]>

▶ Plays or pauses music.

8) **Stop Button** < Quick Run: [c]>

▶ Stops play.

9) **Next Button** < Quick Run: [→], [v]>

▶ Plays the next item on Playlist.

10) **Volume Control Bar** <Shortcut : [↓], [s], [wheel down] / [↑], [d], [wheel up]>

▶ Control the volume by dragging the mouse on the circle while holding down the left mouse button.

11) **Open/Close Playlist Button** <Quick Run: [Alt]+[L]>

▶ Opens or closes the Music playlist window.

#### Opening File

Select a music file to play from the PC or connected device.

1) Click **Menu** or right-click in the title area at the top of the application.

2) Click **Open File**.

3) Select a file from the file list and then click the **OK** button.

※ Alternatively, drag and drop the file onto Player.

4) The file item opened via **Open file** is added to the **My album** folder of Playlist.

※ Support format: \*.MP3, \*.OGG, \*.WMA, \*.ASF(Sound Only), \*.3GP(Sound Only), \*.WAV, \*.AMR, \*.AAC, \*.M4A, \*.MMF, \*.MID, \*.MIDI, \*.QCP, \*.PMD, \*.MP4(Sound Only)

#### Modifying File Information

Allows you to directly modify and manage the music information of files.

1) Open Menu by right-clicking in the Music information window of Player.

※ Playlist also provides the same function.

2) Click **Modify file information** in Menu.

※ You can configure Rating settings via right-click in **Menu> Rating settings** without opening the Modify file information window.

3) Users can directly input, modify, and save to all of the items.

#### Player Settings

Sets up information on files played in Player.

1) Display user information: Displays music information saved in files.

2) Display information automatically.

- ▶ If there is no corresponding information, information saved in the file is displayed.
- ▶ During play, only information is displayed, and information is not saved in the file.

## 05 Application description

### 5.7. Music player > Music playlist

#### Overview

Music playlist allows you to control track playlists played by Music player. <Quick Run: [Alt]+[L]>

※ You can subordinate it to Music player (default state) or independently separate it. (You can drag and shift the title area of Playlist to another place.)

※ Some programs may not be available depending on the country setting.

#### Selecting album

- 1) Click the View album list button located between the album name (default setting: My album) and the playlist.
- 2) The album list is zoomed in.  
※ If you click it in the zoomed-in state, it will zoom out.
- 3) Click the album folder.
- 4) The playlist of the selected album folder is displayed in the list window, and the album name is displayed in the title area.
- 5) To close the album list, click the Zoom out button on the playlist. The album name currently selected will be shown and the rest of the field will be hidden.

#### Adding new album

Creates a new album folder (playlist) to form through user input.

- 1) Open the menu by right-clicking in the album list.
- 2) Click **Add New Album**.
- 3) A new album folder is created. To change the name, refer to [\[Renaming Album\]](#).

#### Deleting selected album

Deletes an album folder added by the user.

※ The basic folder provided (My album) and the disc drive are not removable.

- 1) Select the album folder and right-click to open the menu.
- 2) Click **Delete selected album**.
- 3) The selected album is deleted from the album list.

#### Renaming an album

Renames an album folder added by the user.

※ The names of the basic folder provided (My album) and the disc drive cannot be renamed.

- 1) Select the album folder and right-click to open the menu.
- 2) Click **Rename**.
- 3) The name input box of the selected album is activated.
- 4) Enter the name and press the **Enter** key.

#### Automatic item collection

Automatically searches music files on the PC and adds them to the list.

- 1) Click the **Automatic item collection** button on the bottom left of Playlist application.
- 2) Click the drive location where you want to search for music files.
- 3) The automatic search status is displayed.  
※ If you click the Stop button during automatic search, only music files searched up to that point in time are added to Playlist.

#### Adding Item

- 1) Click the **Add Item** button.
- 2) Select a file to add from the file list and then click the **OK** button.  
※ Alternatively, drag and drop the file onto Playlist.
- 3) The selected file is added to Playlist.

#### Deleting Item <Shortcut : delete key>

- 1) Click and select an item to delete from Playlist.  
※ You can delete an item even while it is playing.

- 2) Click the **Delete item** button.
- 3) The item selected from the list is deleted.

### Copying Item

Copies Playlist items to other album folders or connected devices (mobile phones, MP3s, etc.).  
Hold down the left mouse button after clicking the item to copy, then drag and drop the item to the appropriate album folder or device (a mobile phone or an MP3, etc.).

### Arrange List Setting

Sets the sorting method for Play items on Playlist.

- 1) Select **Menu > Arrange list**.
- 2) Select one of the following sorting methods: **File name, Title, Artist, Play time, File size, Issue date, Rating**  
※ The default method is the order of item addition.
- 3) Items are automatically arranged according to the sorting method.
- 4) After arrangement, you can freely change the order of items by dragging them.

### Display List Setting

Sets the details for displaying Play items on Playlist.

■ **File Name . Type** : Indicates the list order number, file names, and file types.

Example: 1. 01\_Opening(192k).mp3

- Select **Menu > Display list > File name . Type**.

■ **Title - Artist** : Indicates the list order, song titles and artists.

Example: 1. Opening-ELLEGARDEN

- Select **Menu > Display list > Title - Artist**.

### Sending to device podcast

Import music files to **Media manager** and send them to the mobile phone podcast.

- 1) Connect your mobile phone to the PC in MTP mode.
- 2) Open **My Computer** and drag & drop a music file to **Music player playlist**.
- 3) Move the cursor onto the file, right-click it and select Device from the **Send to device podcast** menu.
- 4) The file is sent to the mobile phone.

※ You can select multiple music files and send them all together.

## 05 Application description

### 5.8. Video player

#### Overview

Video player allows you to play videos taken by your mobile phone and digital camera, etc., and a variety of PC video formats.

※ Some programs may not be available depending on the country setting.

#### Configuring application

1) **Menu button** <Shortcut : F10>

▶ Provides functions for opening files, subtitles, Player settings, and version information confirmation.

※ Sound: The list of sound-multiplex video files supported by the video file is provided. - Displays the title, file type, and file size of the video being played.

2) **Display file name. File type-File size**

▶ Displays the title, file type, and file size of the video being played.

3) **Play Screen**

▶ Shows the video being played.

4) **Play Status**

▶ Displays the current Play status (Current playtime/Total playtime).

▶ You can search for a video by dragging left and right while holding the left mouse button down. (Playtime is displayed on the screen.)

5) **Previous Button** <Shortcut : [←], [z]>

▶ Plays the previous item on Playlist.

6) **Play/Pause Button** <Shortcut : [space], [x]>

▶ Plays or pauses a video.

7) **Stop Button** <Shortcut : [c]>

▶ Stops play.

8) **Next Button** <Shortcut : [→], [v]>

▶ Plays the next item on Playlist.

9) **Mute Button** <Shortcut : [a]>

▶ Mutes or reactivates the sound.

10) **Volume Control Bar** <Shortcut : [↓], [s], [wheel down] / [↑], [d], [wheel up]>

▶ Controls volume by dragging left and right while holding down the left mouse button.

11) **Video Playlist Open/Close Button** <Shortcut : [Alt]+[L]>

▶ Opens or closes the Video playlist window.

#### Opening File <Shortcut: [Ctrl]+[O]>

Select a video file to play from the PC or connected device.

1) Click **Menu** or right-click in the title area at the top of the application.

2) Click **Open file**.

3) Select a file from the file list and then click the **OK** button.

※ Alternatively, drag and drop the file onto Player.

※ Support format: \*.3GP, \*.MP4, \*.SKM, \*.K3G, \*.MPG, \*.MPEG, \*.ASF, \*.AVI, \*.WMV, \*.DIVX

#### Subtitle settings

Sets the subtitles for a video.

1) Click **Menu** or right-click in the title area at the top of the application.

2) If you click **Subtitles**, the subtitles menus open.

▶ **Display subtitles** <Shortcut: [Ctrl]+[I]>: If you search for subtitles files and select one, the selected file is applied to the current video.

※ The subtitles file whose name is the same as the name of the video file automatically opens.

▶ **Subtitle sync +0.5** <Shortcut: [Ctrl]+[=]>: Sets the subtitles to display 0.5 seconds later.

▶ **Subtitle sync -0.5** <Shortcut: [Ctrl]+[<]>: Sets the subtitles to display 0.5 seconds earlier.

▶ **Decrease subtitles** <Shortcut: [Ctrl]+[;]>: Takes the size of the subtitles display down a step.

▶ **Increase subtitles** <Shortcut: [Ctrl]+[']>: Takes the size of the subtitles display up a step.

▶ **Hide subtitles** <Shortcut: [Ctrl]+[h]>: Does not display subtitles.

※ When the subtitles are hidden, this is changed to View subtitles.

※ Supported Subtitle formats : \*.smi , \*.srt , \*. sub



### **Full screen <Shortcut : [Ctrl]+[F]>**

1) Right-click in the area of Play screen.

2) When Menu appears, click **Full screen**.

- ※ In Full screen play, the control bar appears only when the mouse pointer is located at the top or bottom of the screen.
- ※ To return to the previous screen size, press the ESC key or click the General mode button on the top right.

### **Player Settings <Shortcut : F9>**

Click **Player setting** from the menu

▶ **Fit to window and screen size/Fix screen size:** Provides the preferred method of viewing

▶ **Consecutive play:** To play a Playlist item consecutively, click **Consecutive play**.

※ Files composed of the same file name are played consecutively even if Consecutive play is not selected.

Example: ABC\_01.avi, ABC\_02.avi ...

## 05 Application description

### 5.9. Video player > Video playlist

#### Overview

Video Playlist allows you to control Playlist played by Video Player.

※ Some programs may not be available depending on the country setting.

#### Adding Item

1) Click the **Add item** button from the bottom of Playlist.

2) Select a file to add from the file list and then click the **OK** button.

※ Alternatively, drag and drop the file onto [Playlist].

3) The selected file is added to Playlist.

※ Support format: \*.3GP, \*.MP4, \*.SKM, \*.K3G, \*.MPG, \*.MPEG, \*.ASF, \*.AVI, \*.WMV, \*.DIVX

#### Deleting Item

1) Select an item to delete.

※ You can delete an item even while it is playing.

2) Click the **Delete item** button.

3) The item selected from the list is deleted.

## 05 Application description

### 5.10. Image viewer

#### Overview

Image viewer allows you to view pictures taken by your mobile phone and digital camera, etc., and a variety of PC formats.

- ※ Supported formats: BMP, JPG (JPEG), GIF, PNG, WBMP, and TIF
- ※ Some programs may not be available depending on the country setting.

#### Configuring application

- 1) **Menu button** <Shortcut : F10>
  - ▶ Provides functions for opening files and version information.
- 2) **Display file name. File type (Current order/Total number)**
  - ▶ Displays the title and file type of the image being seen and shows the number of images in the appropriate location folder and the order of the current image.
- 3) **Image window**
  - ▶ Shows the selected image.
- 4) **File information display window**
  - ▶ Allows you to check the current image size, file capacity, and last modified date (time).
  - ▶ During size adjustment, size information is displayed using %.
- 5) **Previous Button** <Shortcut: [←], [z], [Page Up]>
  - ▶ Opens the image before the current image.
- 6) **Next button** <Shortcut: [→], [x], [Page Down]>
  - ▶ Opens the image after the current image.
- 7) **Left/Right rotate button** <Shortcut: [c]/[v]>
  - ▶ Rotates the image 90 degrees.
- 8) **Fit to window size button**
  - ▶ Adjusts the image size to the window size.
  - ▶ In the case of preferred Image size, the image size is adjusted to 100%.
- 9) **Zoom out button** <Shortcut: [↓], [scroll down], [s]>
  - ▶ Decreases the image size step by step.
  - ▶ 15 steps: 5/10/15/20/30/50/70/100/150/200/300/500/700/1000/1500%
- 10) **Zoom in button** <Shortcut: [↑], [scroll up], [d]>
  - ▶ Increases the image size by one step.
  - ▶ 15 steps: 5/10/15/20/30/50/70/100/150/200/300/500/700/1000/1500%

#### Opening file <Shortcut: [Ctrl]+[O]>

Select an image file to open from the PC or connected device.

- 1) Click **Menu** or right-click in the title area at the top of the application.
- 2) Click **Open file**.
- 3) Select a file from the file list and then click the **OK** button.
  - ※ Alternatively, drag and drop the file onto Viewer.
  - ※ Support format: \*.BMP, \*.JPG, \*.JPEG, \*.GIF, \*.PNG, \*.WBMP, \*.TIF, \*.TIFF

#### Full screen <Shortcut: [Ctrl]+[F]>

- 1) Right-click in the image area.
- 2) When Menu appears, click **Full screen**.
  - ※ In Full screen viewing, the control bar appears only when the mouse pointer is located at the top or bottom of the screen.
  - ※ To return to the previous screen size, press the ESC key or click the **General mode** button on the top right.

## 05 Application description

### 5.11. Disc ripping

#### Overview

Extracts sound sources from music CDs, and imports music information from the web to apply it more accurately and easily.

※ Some programs may not be available depending on the country setting.

#### Selecting CD

- 1) Insert a music CD into the CD drive.
  - ▶ If there is only one drive, the CD is automatically recognized and the list is displayed.
- 2) If there are two or more drives, click the drive selection box.
- 3) Check the CD title in the expanded selection box.
- 4) Click the drive containing the CD to be extracted.
- 5) The corresponding drive list is displayed.

#### Selecting save format

Select the file type and sound quality of the sound source to be extracted.

- 1) Expand the selection box and select a file format to save.
  - 2) Select the sound quality supported by the file format.
    - ▶ High quality sound provides clean sound quality, but song capacity is reduced.
    - ▶ Low quality sound allows for more pieces of music to be saved.
- ※ Support format: \*.MP3, \*.AAC, \*.M4A, \*.WAV

#### Modifying album information

Allows you to check and modify the property value (ID3 tag: sound source information enabling easy control of sound sources such as album names and genres, etc.) of the sound source to be extracted.

- 1) Click **Menu > Modify album information**.
- 2) To modify the information, enter directly or click the **Import album information** button to import it from the web.
- 3) Then, click the **OK** button.

#### Disc ripping settings

Allows users to change detailed settings for extracting sound from discs.

- 1) Select **Menu > Ripping settings**.
- 2) Set up each of the following items.
  - ▶ **Save location settings:** Directly input the location in which the extracted file is to be saved or select a folder by pressing the **Find path** button on the right side of the input box. Default settings location is C:\Documents and settings\User name\Documents\My music.
  - ▶ **File name rule**
    - ① Select properties to form the name of the extracted file. (Artist/Album/Track No./Music title/Genre/Bit transmission rate)
    - ② Select symbols to divide the properties ((None)/ (Space)/-(Dash)/.(Point)/\_(Underline))
    - ③ You can check the setup rules in the Preview window.
  - ▶ **Eject disc after ripping completion:** Click on this to automatically eject the CD after the ripping completion.

#### Ripping

Extracts all items on a CD or extracts item by item.

##### ■ Ripping all items

- 1) Insert a music CD into the CD drive.
- 2) Click the drive containing the CD to be extracted.
- 3) Click the **Rip all items** button.
- 4) The sound source extraction process window is displayed.
  - ※ If you click the **Stop** button during the extraction process, only the sound sources extracted up to that point in time will be saved.
- 5) If it is completed or stops, you can check the status of the extraction process by clicking the **View log** button.

■ **Ripping selected items**

- 1) Insert a music CD into the CD drive.
  - 2) Click the drive containing the CD to extract.
  - 3) Select and click an item to extract.
  - 4) Click the **Rip selected items** button.
  - 5) The sound source extraction process window is the same as that for **Rip all items**.
- ※ Extracted items are shown in grey in the list, and are excluded from the extraction list when using **Rip all items**.

## 05 Application description

### 5.12. Disc burning

#### Overview

Disc burning burns the user's files to music discs or data discs.

※ Some programs may not be available depending on the country setting.

#### Selecting Burning Format

Selects Audio disc burning or Data disc burning.

1) Click the Data burning format selection box.

▶ The default setting is **Data**.

▶ The list arrangement method is changed according to the burning format.

▶ File information displayed in the list is also changed according to the arrangement method.

Burning format	Burning format	Arrangement method
Data (Default settings)	Name (Default settings)	File name.Extension / Capacity
	File size	File name.Extension / Capacity
	Format	File name.Extension / Capacity
	Date	File name.Extension / Capacity
Audio	File Name (Default settings)	File name.Extension / Time
	Title	Title-File name / Time
	Artist	Artist-File name / Time
	Album	Album-File name / Time
	Issue date	Release date-File name / Time
	Rating	Rating-File name/ Time
	Name (Default Settings)	File name.Extension / Capacity

#### Selecting drive

1) If there is no burner, '**No burner connected**' is displayed.

2) If a burner is connected or newly connected, it is automatically displayed.

3) If there are two or more burner drives, click the drive selection box.

4) Click the drive for burning.

5) The corresponding drive list is displayed.

#### Disc name settings

1) If there is no empty disc in the selected drive, '**No disc**' is displayed.

2) If an empty disc is inserted, '**No name**' is displayed.

3) Click the input box and enter the name.

#### Adding item

Add a file to save on the disc.

1) Click the **Add item** button.

2) Select a file to add from the file list and then click the **OK** button.

※ Alternatively, **drag and drop the file onto Disc burning**.

3) The selected file is added to the burning list.

#### Deleting item

Delete the selected item from the burning list.

1) Select an item to delete.

2) Click the **Delete item** button.

3) The item selected from the list is deleted.

#### Disc burning settings <Shortcut: F9>

Designates the detailed settings regarding burning.

1) Click **Menu > Burning settings**.

2) Set up each of the following items:

- ▶ **Burning speed:** Select burning speed.
- ※ Burning is relatively stable if slow speed is used.
- ▶ Eject disc after burning: Click on this to automatically eject the CD after burning.
- ▶ **Save list:** The list previously formed is maintained even if the application restarts.

## **Burn**

Starts burning (writing) the corresponding list onto disc.

※ The button is activated only when an empty disc is inserted and there is at least one item in the burning list.

1) When burning is ready, the **Burn** button is activated for use.

2) Click the **Burn** button.

3) The burning process begins. You can check its progress.

※ If it is completed or stops, you can check the progress by clicking the **View log** button.

## 05 Application description

### 5.13. Internet connector

#### Overview

Internet connector allows you to connect to the Internet or a corporate communication network through a mobile phone modem, etc.

※ Some programs may not be available depending on the country setting.

#### Selecting modem device

1) Click the selection box showing the connection location and the device name.

Example: (Port1) SPH-3500

2) Click an item to be used as a modem device in the list of the expanded selection box.

※ If only one device is connected, the selection box is not expanded.

※ If there is no device connected, a message saying No modem device found is displayed.

▶ If a device is connected, it is automatically recognized. The location, as well as the device connected, will be displayed. (See **Stage** > [4.4. Searching for a device](#) )

▶ If the application does not recognize the device connected, check the following:

1. Is the device turned on?
2. Is the cable securely connected?

#### Defining connection properties

1) When a device is first connected, the connection settings window automatically opens.

▶ In the case of a previously connected device, the previous settings are automatically applied.

2) Enter the name for the connection properties.

▶ If an appropriate name is not entered, Device name\_maker name will be automatically set.

3) **Modem driver settings** are automatically set up using the device information.

▶ If there is no modem driver, a driver provided by the corresponding device maker must be installed.

4) **Country settings** are automatically set up through the standard time zone information in the OS.

▶ If the country settings are set up incorrectly, select the appropriate country.

5) Select the appropriate **Network supplier** for the device.

6) Advanced network settings are automatically set up using the device information.

▶ If the **Connection property error** appears, contact the corresponding service company.

#### Adding connection properties

Allows you to create and use several connection properties per device.

1) Click the **Add connection** button at the bottom right.

2) The connection property window opens. (See [Defining connection properties](#))

3) If you press the **OK** button, the connection properties set up are saved and automatically selected.

4) To change connection properties, click **Menu** > **Select connection**, and select from the connection property list set up by the user.

#### Deleting connection properties

If you click the Delete connection button at the bottom right, the connection properties currently selected are deleted.

#### Selecting a connection

1) Click **Menu** > **Select connection**.

2) Select connection properties from the connection property list displayed.

3) You can check the details of the selected connection properties in the connection information display area.

#### Internet connection

1) Select a modem device.

2) Click the **Connect** button at the bottom left of the application.

3) The bar showing the progress of the connection attempt is displayed.

4) If connection is successfully made, the connection state is displayed and the **Connect** button will become **Disconnect**.

※ In the case of a device being connected to the Internet, the functions provided by Samsung New PC Studio are limited.



※ If the selected device is in the process of performing other functions such as File transfer, etc., Internet connection is impossible.

Cancel the process, or connect to the Internet after the completion of the process.

(For safety purposes, please connect to the Internet after completion of the process.)

### **Configuring/Modifying connection properties**

If there is a problem with the Internet connection, the user can manually set up connection values.

- 1) Click **Menu > Connection settings**.
- 2) When the connection settings window appears, modify the information displayed in the error message.
- 3) Click the OK button to save the modified information.

## 05 Application description

### 5.14. SIM Phonebook

#### Overview

In the SIM Phonebook, contacts saved in the SIM card can be added, edited or deleted in real time. If the phone using the SIM card is not connected, no features of the SIM Phonebook can be used.

※ Some programs may not be available depending on the country setting.

#### Selecting a mobile phone.

1) Click the box indicating the connection location and device name of the phone to select.

Example: (Port1) SPH-3500

2) Click items for managing the SIM Phonebook in the expanded selection list.

▶ When a phone using the SIM card is connected, it is automatically recognized and displayed on the phone selection list. (Refer to [\[ 4.4. Searching for a device \]](#).)

▶ If the application is not recognized while the phone using the SIM card is connected, check the following:

1. Is the device turned on?
2. Is the cable connected?

#### Adding a contact

1) Click the Add icon at the bottom of the SIM Phonebook.

※ Alternatively, double-click or right-click a blank space in the contact list and click the **Add** menu item.

2) When the Add contact window opens, enter the required information and click the OK button. Then the contact is added to the list.

#### Editing a contact

1) Double-click an item to edit in the contact list.

※ Alternatively, right-click on the corresponding item and click the **Edit** menu item.

2) When the **Edit contact** window opens, edit the information and click the **OK** button to complete the editing.

※ Note that real SIM information is edited.

#### Deleting a contact

1) Select an item to delete from the contact list and click the **Delete** icon at the bottom of SIM Phonebook.

※ Alternatively, right-click on the corresponding item and click the **Delete** menu item.

2) When the window for confirming deletion pops up, click Yes. The contact is then deleted from the list.

※ Note that real SIM information is edited.

3) When you want to delete several items, select them while pressing and holding down the Ctrl key, or select items by dragging the cursor across them, and click the Delete icon at the bottom of the list.

#### Refresh

1) Click the **Refresh** icon at the bottom of SIM Phonebook.

2) Retrieve the selected information from the SIM card.

## 05 Application description

### 5.15. Video converter

#### Overview

The Video converter allows you to easily convert file formats according to your needs.

※ Some programs may not be available depending on the country setting.

#### Converting video

1) Select a video file from My Computer or a Connected device explorer, then drag and drop the item to the File list area.

※ Alternatively, click **Add items** at the bottom or click **Menu > Open file**.

Select a video file from the Open window and click Open.

2) Click **Delete items** at the bottom to delete the added file.

3) Click the Preset selection box and then the desired presets from the Preset list.

4) Click **Select a location to save to** and specify a location to which to save the file.

5) Click the **Convert** button at the bottom to begin converting all the files in the list.

6) Select **Turn off the PC when finished** in the Conversion progress window to shut down the system after conversion is complete.

※ All unsaved information from applications other than New PC Studio may be lost when the system shuts down. Make sure that work in progress in all other applications is saved and closed before proceeding.

7) Click the **Close** button after conversion is complete and return to the main screen.

※ Items successfully converted are displayed in green. Failed items are displayed in red.

※ Additional video support format: \*.3GP, \*.MP4, \*.SKM, \*.K3G, \*.MPEG, \*.MPG, \*.ASF, \*.AVI, \*.WMV, \*.DIVX

※ Conversion support format: \*.MP4, \*.K3G, \*.SKM

#### Subtitle settings

Click the selection box next to the file name from the file list to toggle subtitles and select the desired subtitles setting.

▶ **O**: Include subtitles when converting. (Set automatically if there is a subtitles file with the same name as the video file in the corresponding folder.)

▶ **X**: Do not include subtitles when converting. (Set automatically if there are no subtitles files with the same name as the video file in the corresponding folder.)

▶ **Find**: Manually specify a subtitles file to use if there are no subtitles or if different subtitles are required.

#### Managing presets

Edit the default presets or the presets that are created automatically when connecting a device. You can also customize your own presets.

##### ■ Opening the Manage presets window

1) Click the menu at the top and select **Manage presets**.

2) Select and manage presets from the current presets displayed in the Manage presets window.

##### ■ Edit presets

1) Select an item from the Manage presets window and click the **Edit** button.

2) When the Edit presets window appears, change the screen size, image settings, sound settings, and subtitle size as needed and click **OK** to confirm the changes.

※ The screen size and subtitle size ratios applied can be previewed in the Preview area at the top.

3) For default presets, click the **Make default** button to restore the initial presets.

##### ■ Delete presets

1) Select an item from the Manage presets window and click the **Delete** button.

2) Click the **Yes** button from the Delete popup window to confirm deletion.

※ Default presets cannot be deleted.

##### ■ Add presets

1) Click the **Add** button.

2) Enter the preset name and set the screen size, video settings, sound settings and subtitle size as needed and then click the **OK** button.

- 3) The newly added settings can be confirmed from the Preset selection box in the main screen.
- ※ A maximum of 20 user presets can be added.

## 05 Application description

### 5.16. Message manager

#### Overview

Message manager allows you to import SMS and MMS from your mobile phone and manage them on your PC.

※ Some programs may not be available depending on the country setting.

#### Import Message

1) Click the **Import message** button at the bottom.

※ If multiple devices are connected at the same time, select the mobile phone to import messages from. Select **All connected mobile phones** to import all messages.

※ The **Import** function is only available with mobile phones that support message importing.

2) Click **OK** after SMS has been imported from your mobile phone.

#### View SMS messages

1) Click the **SMS** tab from Message manager.

2) Received messages, Sent messages, Outgoing messages, Drafts, and My message box are all displayed at the top. Click a message box to see its contents.

3) Double-click or right-click a message list item and select **Open**.

4) Message type, content and information can be confirmed from the View message popup window that appears.

▶ **For received messages**, the buttons below will appear. (Only available with mobile phones that support outgoing messages.)

**Reply**: Synchronized with Send message, with phone numbers entered automatically.

**Forward**: Synchronized with Send message, with the contents entered automatically.

**OK**: Closes the View message window.

▶ **For outgoing messages**, the buttons below will appear. (Only available with mobile phones that support outgoing messages.)

**Resend** : Synchronized with Send message, with phone numbers entered automatically.

**OK** : Closes the View message window.

※ The Reply, Forward, and Resend functions also apply to View MMS.

#### View MMS messages

1) Click the **MMS** tab from Message manager.

2) Received messages, Sent messages, Outgoing messages, Drafts, and My message box are all displayed at the top. Click a message box to see its contents.

3) Double-click or right-click a message list item and select **Open**.

4) Message type, title, attachment, content, and information can be confirmed from the View message popup window that appears. The buttons below will appear.

**Play** : Plays the MMS message.

**Attachment** : Displays the Attachment list window.

#### Preview

Move your mouse cursor over the message list to display contents, name and phone number.

#### Delete message

1) Select the message to delete from the message list.

2) Click the **Delete selected item** button at the bottom.

※ Alternatively, press the Delete key on your keyboard.

※ Alternatively, right-click and select **Delete list**.

3) Click the **Yes** button from the Deletion popup window to confirm deletion.

#### Import message file

1) Click **Menu > Import**.

2) Click the **Find file** button from the Import popup window and select the message file to import.

3) Click **Next** to start importing the message.

4) Click the **Complete** button after the import is finished.

※ Support format: \*.NEF, \*.SMF

## Export message file

- 1) Click **Menu > Export**.
  - 2) Select the message box from which to export from the Export popup window and click **Next**.
  - 3) Click the **Find folder** button and select the folder to export.
  - 4) Click **Next** to start exporting the message.
  - 5) Click the **Complete** button after the export is finished.
- ※ Support format: \*.NEF

## Managing My message box

### ■ Add message box

- 1) Click **My message box** at the top.
- 2) Click the My message box item area or the folder list area on the right, and then click **Add message box**.
- 3) The newly added message box will appear in the folder list on the left. Enter the name of the message box in the input box below the new message box to complete this process.

### ■ Rename message box

- 1) Right-click the message box added by a user and click **Rename message box**.
- 2) Enter a new name into the input box.

### ■ Delete message box

- 1) Click **My message box** at the top.
- 2) Select the folder to delete from the folder list area on the left of My message box, then right-click and click **Delete message box**.
- 3) Click **Yes** from the Delete message box popup window to confirm deletion.

## 05 Application description

### 5.17. SMS sender

#### Overview

Sends an SMS message written on your PC to your connected mobile phone.

- ※ This function is unavailable if your mobile phone is not connected to your PC or does not support message transfer.
- ※ Some programs may not be available depending on the country setting.

#### Send SMS

1) Connect a mobile phone that supports SMS. The names of mobile phones that support SMS will appear at the top of the Connected device list after connection.

- ※ If multiple devices are connected at the same time, select the mobile phone you wish to use.
- ※ Send SMS is not available if your mobile phone is not connected to the PC.

2) Enter your message in the SMS content input window.

※ Phonebook, Schedule, Memo, To do, and D-Day items can also be inserted into your message by dragging and dropping items into the input window.

3) Enter the phone number in the recipient input box.

※ Alternatively, drag and drop phonebook items to the input box.

4) Click the **Send message** button. A progress message will appear.

5) Click the **OK** button after message transfer is complete.

#### Add recipient

Entering a recipient in the Recipient input box will automatically create a new input box.

This way, you can easily add as many new recipients as you want in the newly created input box.

#### Delete recipient

Click the **Close** button next to the recipient input box to delete. The recipient will be deleted.

#### Save to drafts

1) Click the **Save to Drafts** button at the bottom while you are writing a message.

2) Unfinished messages in Drafts are saved in **Message manager drafts**. To view a draft message, go to **Message manager drafts**.

## 05 Application description

### 5.18. MMS sender

#### Overview

Sends an MMS message written on your PC to a connected mobile phone.

- ※ This function is unavailable if your mobile phone is not connected to your PC or does not support message transfer.
- ※ Some programs may not be available depending on the country setting.

#### Send MMS

1) Connect a mobile phone that supports MMS. The names of mobile phones that support MMS will appear at the top of the Connected device list after connection.

- ※ If multiple devices are connected at the same time, select the mobile phone you wish to use.
- ※ Send MMS is not available if your mobile phone is not connected to the PC.

2) Enter your message in the MMS content input window.

- ※ Available options may vary depending on the mobile phone connected.

▶ **Text effect:** Click the **Text effect** button at the bottom. Set the font color, font size, style, and background color from the Text effect popup and click the **OK** button.

▶ **Preview:** Click the Preview button at the bottom. This shows how the message to send will look in the current window.

##### ▶ Add image

① Click the **Add** button below.

② Select a file to add from the Open window and click the **Open** button. The selected file will be added.

- ※ Support format: \*.BMP, \*.JPG, \*.JPEG, \*.PNG, \*.GIF, \*.WBMP

##### ▶ Add video

① Click the **Add** button below.

② Select a file to add from the Open window and click the **Open** button. The selected file will be added.

- ※ Support format: \*.3GP, \*.MP4, \*.SKM, \*.K3G, \*.MPEG, \*.MPG, \*.ASF, \*.WMV

##### ▶ Add sound

① Click the **Add** button below.

② Select a file to add from the Open window and click the **Open** button. The selected file will be added.

- ※ Support format: \*.MP3, \*.AAC, \*.WAV, \*.M4A, \*.MMF, \*.MID, \*.MIDI, \*.AMR, \*.QCP

▶ **Add/Delete page:** Click the Add page button at the bottom. Select the page to delete using the horizontal slide bar and click the **Delete page** button.

##### ▶ Add/Delete attachment

① Click the **Attachment** button at the top.

② Add an attachment by clicking the **Add** button from the Attachment popup window on the right. To delete attachments, select the attachment and click the **Delete** button.

- ※ Phonebook, Schedule, Memo, To do, and D-Day items can also be inserted into your message by dragging and dropping items into the input window.

3) Enter the phone number in the recipient input box.

- ※ Alternatively, drag and drop phonebook items to the input box.

4) Click the **Send message** button. A progress message will appear.

5) Click the **OK** button after message transfer is complete.

- ※ Support format: \*.\* ( All support format)

#### Add recipient

Entering a recipient in the Recipient input box will automatically create a new input box.

Therefore you can easily add as many new recipients as you want in the newly created input box.

- ※ Recipients are categorized as General, Cc, and Bcc.

#### Delete recipient

Click the **Close** button next to the recipient input box to delete. The recipient will be deleted.

#### Save to drafts

1) Click the **Save to Drafts** button at the bottom while you are writing an MMS.

2) Unfinished messages in Drafts are saved in **Message manager drafts**. To view a draft message, go to **Message manager drafts**.



## 05 Application description

### 5.19. Email sync

#### Overview

Samsung New PC Studio provides the Email sync function, which synchronizes the email message box of a mobile phone connected to PC and Outlook.

Samsung New PC Studio supports the synchronization of multiple message boxes within one mobile phone and the simultaneous synchronization of multiple phones. But a mobile phone in MTP or UMS mode cannot use the sync function in the Email sync application.

You can use the sync function for all phones at once or per mobile phone by integrating the DB of mobile phones available for the sync function and the Outlook DB.

※ Some programs may not be available depending on the country setting.

#### How to sync

※ Use Outlook for the target mailbox for the Email sync application.

- 1) Connect a mobile phone in New PC Studio.
- 2) Display the Email sync application from the Toolbox on the stage.
- 3) If all mobile phones connected to New PC Studio are in MTP or UMS mode, the following message is displayed: "There are no connected mobile phones available for the email sync. Check the modes of the connected mobile phones."
- 4) When a mobile phone in a mode supported by the sync (Obex) function is connected, the message disappears, and the message boxes of this mobile phone are listed.
- 5) Up to three mobile phones in modes supported by the sync are listed, and the message boxes of mobile phones to synchronize can be selected by checking the boxes on the left.
- 6) If you select any mobile phones on the list, their respective message boxes are also selected. You can deselect the message boxes that you do not want to synchronize.
- 7) Clicking the Edit icon of a mobile phone to synchronize will display the Sync window. You can select a folder where the message boxes of the mobile phone and Outlook are synchronized.
- 8) The pop-up windows of the 'Sync folder' button and the 'Edit sync folder' button are the same. As the sync folder exists in a mobile phone, the same level folder is selected in the Outlook folder list area.
- 9) To execute synchronization, select a folder to synchronize in the 'Sync folder' window and click **OK**.

#### Delete/Edit folder to synchronise

- 1) Connect a mobile phone in New PC Studio.
- 2) Select a message box to delete and click **OK** to delete the box from the list.
- 3) To re-select a sync folder from a mobile phone supported by the Email sync function, click the **Edit sync folder** icon next to the message box list.
- 4) Select a message box to edit and click **OK** to display the box on the list.

#### Execute/Stop/Complete sync

- 1) Click the **Sync** icon at the bottom left of the 'Email sync' application to synchronize the selected list items in the application.
- 2) Clicking the **Sync** icon will display the Synchronization window along with Outlook and the mobile phone list. You can also see the Add, Edit and Delete status of the ongoing synchronization in a table.  
※ Synchronization will be executed after checking 'Auto security', and the sync order will be based on the order of the checked mobile devices and the list orders of the devices.
- 3) When the synchronization is complete, the Sync Complete message will appear. Click the **Close** button to close the Synchronization window.
- 4) Clicking the **Stop** button in the synchronization window will reflect only what has been synchronized before the click and stops the sync process.

#### Exceptions in Synchronization

- 1) Sometimes, the 'Email sync' application does not recognize when the Outlook folder is removed from Outlook during synchronization. In this case, when clicking the Sync button, the following error message pops up: "Personal folder 'Deleted mailbox name' is no longer valid. The mail folder has been deleted."
- 2) When an unknown error occurs and importing folder information from Outlook fails, the following error message pops up: "Importing folder information from Outlook has failed because of an unknown error."

### Email sync settings

- 1) Click the **Menu** button at the top of the 'Email sync' application to display the Context drop-down menu.
- 2) Click **Email settings** to display the Settings window.
- 3) Usually, there is no limit to the email size, but it is recommended that 500 kB be set as default, since it should be based on the mobile phone mail size.
- 4) The last date available for synchronization should be set to 30 by default.
- 5) Usually, there is no limit to the email attachment size, but it is recommended that 500 kB be set as default, since it should be based on the mobile phone mail size.
- 6) Click the **Reset** button to return the settings to default values and click **OK** to close the Settings window.

### Exit application

- 1) Click the **Exit** button to exit the 'Email sync' application.

## 05 Application description

### 5.20. Media manager

#### Overview

**Media manager** allows users to manage and edit multimedia files (music, photo and video files), send music files easily to other devices. It also allows setting them as a ringtone.

**Media manager** is composed of **Music/Photo/Video** and you can select the desired application by clicking on its icon.

- ※ Some programs may not be available depending on the country setting.
- ※ Media manager is a separate stage to manage media and does not support Toolbox.

#### Application structure

- 1) Music manager
- 2) Photo manager
- 3) Video manager

#### NPS file folders

- 1) Installing **Media manager** will create **NPS music**, **NPS video** and **NPS photo** folders in the NPS folder of My Documents on the PC.

Multimedia files from the PC or files of other devices are stored and managed in these folders. Media manager scans the files in the folders and creates viewer directories.

- 2) You can specify folders other than the default folders, and then scan and import files from them..

(You can specify a file path in the Global menu > Settings.)

- 3) A file imported from the connected device to application is automatically added to the default folders.

- 4) After adding files to the default folders, exiting and restarting **Media manager** will update the files in the viewers automatically.

If you exit and restart Media manager, the last screen right before the restart will still be maintained.

#### Move and save files between explorers

- 1) You can drag & drop files between My Computer and the device explorer..
- 2) When dragging & dropping a file to the device, the file is automatically saved in the storage in the device explorer.
- 3) When sending a file to the device, if the file size or extension is different, the file is automatically converted.

#### Media manager resizing

**The icon area of Title menu** as well as the vertical length of the menu classification area, cannot be resized.

- ※ The height and width are resized according to the size of the contents area.
- ※ The heights of the menu, basket and toolbar areas cannot be resized.

#### Refresh

Automatically reflects files added to and deleted from **My Computer > My Documents > NPS > NPS music** folder to the list.

- 1) Click the **Global menu** button on the left side of the submenu bar below the Application menu.
- 2) Select **Refresh** from the **Global menu**.
- 3) The items on the list are refreshed.

#### Import file from PC

- 1) Click the **Global menu** button on the left side of the submenu bar below the Application menu.

- 2) Select **Import file from PC** from the **menu**.

- 3) When **My Computer** opens, select one or several (Control + Click) files and click the **Open** button.

※ You can filter file types by clicking the combo boxes.

- 4) Click **OK** when the pop-up appears.

※ If you do not want to see the pop-up window again, click the '**Do not show this message again**' tick box and then click **OK**.

- 5) Files have been added to the **Music manager** list.

※ To check the added files :

Click **Playlist** in **Music - Global menu** and then '**Recently added**' on the submenu.

To check the added files: click **Album** in **Photo/Video – Global menu** and then '**Recently added**' on the submenu.

※ You can add files easily by clicking **My Computer** and then dragging & dropping the files to the **Media manager** list.

※ To cancel importing, click the **X** icon in the Display panel of **Playback control bar**.

## Import folder from PC

- 1) Click the **Global menu** button on the left side of the submenu bar below the Application menu.
- 2) Select **Import folder from PC** from the **menu**.
- 3) When **My Computer** opens, select one or several (Control + Click) folders and click the **Open** button.
- 4) Click **OK** when the pop-up appears.
  - ※ If you do not want to see the pop-up window again, click the '**Do not show this message again**' tick box and then **OK**.
- 5) Files have been added to the **Media manager** list.
  - ※ To check the added files :  
Click **Playlist** in **Music - Global menu** and then '**Recently added**' on the submenu.  
To check the added files, click **Album** in **Photo/Video Global menu** and then '**Recently added**' on the submenu.
  - ※ You can add folders easily by clicking **My Computer** and then dragging & dropping the folders to the **Media manager** list.
  - ※ To cancel importing, click the **X** icon in the Display panel of Playback control bar.

## Send file to device

- Sends a music file from the PC local drive to a device.
- ※ When you use your mobile phone in Korea, you cannot send a music file if its **authentication code does not match the authentication code of Media manager** and the **device**.
- 1) Select one or several (Control + Click) music files on the list.
  - 2) Click the **Global menu** button on the left side of the submenu bar below the Application menu.
  - 3) Click **Send to device** from the **menu** and select a device to which to send music files.
    - ※ When there are no devices connected, the menu item is disabled.
  - 4) The selected music files have been sent to the specified music folder of the device.
    - ※ Music files cannot be sent when their source files have been deleted or the links to their source files are not available.
- ※ You can send music files by dragging & dropping them in the **Device** explorer in **Media manager**.

## Import device file

- Imports a file from a device to the PC's local drive.
- ※ If you use your mobile phone in Korea, you cannot import a music file from device to PC.
- 1) Click the **Global menu** button on the left side of the submenu bar below the Application menu.
  - 2) Click **Import device file** on the **menu** and select a device from which to import music files.
    - ※ When there are no devices connected, the menu item is disabled.
  - 3) When the device explorer opens, select one or several (Control + Click) files and click the OK button.
  - 4) When the pop-up window appears, click the OK button.
    - ※ If you do not want to see the pop-up window again, click the '**Do not show this message again**' tick box and then **OK**.
  - 5) Files have been added to the **Media manager** list.
    - ※ You can add files easily by clicking the **Device** icon and then dragging & dropping the files to the list in **Media manager**.

## Settings

- Provides different settings for the content items (Music/Photo/Video) in Media manager.
- ※ For more information, refer to the **Settings** help for each contents.

## Sharing Files with a Home Server Device

- Allows you to browse or play music, photo or video files that are managed by **Media Manager** in a DLNA-certified device.
- ※ The default setting for file sharing is ON.

- 1) Select a file you want to share from **All** and drag & drop it to the **Connected Home sharing list** in **Playlist/Album**.
  - ※ Alternatively, select one or several (Ctrl + Click) files, right-click and select **Add to playlist** (for Photo or Video Manager, **Add to Album**) > **Connected Home sharing list**.
- 2) Click **Playlist/Album** and then click **Connected home sharing list**.
- 3) You can check the items added to the list.
- 4) The default setting for file sharing is ON. If it is set to OFF, you can change it to ON in the **Global menu** > **Settings**.

※ The file sharing can be set differently for each media type (music, photos, and videos).

※ If the file sharing is set to ON, the ON icon is displayed at the right side of the **Connected Home sharing list** title.

## 5.20.01. Music manager

### Overview

**Music manager** allows users to manage, store, share and play music files in PC as well as export and import files to and from Samsung mobile phones and MP3 players.

※ Supported formats: MP3, OGG, WMA, ASF (sound only), 3GP (sound only), WAV, AMR, AAC, M4A, MMF, MID (MIDI), QCP, PMD, MP4 (sound only)

※ Supported formats for mobile phone file transfer in Korea: MP3, SMP, SAP

### Application structure

#### 1) Top menu button

- Global menu

- All music : Lists up and displays all files in Music manager.

- Playlist type: Basically consists of the recently added or played file menu, the 'My ringtone' list, the 'Send to device list', the 'Connected home sharing list' where files are shared with a DLNA-certified device, and the user-created playlist menu.

※ The default playlists may differ depending on the country setting.

- Sort by release date : Sorts files based on release date of IID3 tag.

- Sort by genre: Sorts files based on genre of ID3 tag.

- Sort by artist: Sorts files based on artist of IID3 tag.

- Audio CD: Plays an inserted CD.

#### 2) Global menu button

- Refresh

- Import file from PC

- Import folder from PC

- Send to device

- Import device file

- Import playlist

- Export playlist

- Delete missing files

- Settings

- Help

- Version information

#### 3) Submenu

- Playlist submenu

- Release date submenu

- Genre submenu

- Artist submenu

#### 4) File information window

- This window shows the Title, Artist, Album art, Preference, CD no., Track no., Album name, Release date, Genre and Description of a currently playing music file.

- To modify the information, enter directly or click the **Import album information** button to import it from the web.

#### 5) Playback control bar

▶ Repeat settings

- Selects repeat playback types.

- No repeat, Repeat all, Repeat one song.

▶ Shuffle settings

- Shuffle plays songs on the playlist randomly. This option selects shuffle types.

- Shuffle, No shuffle.

▶ Play status

- Displays the current play status (current play time/total play time) on the Play button.

- You can search music by holding down and dragging your mouse.

▶ Previous button < Shortcut : [←], [z]>

- Plays the previous item on the playlist.

▶ Play/Pause button < Shortcut : [space], [x]>

- Plays or pauses a music file.

- ▶ Stop button < Shortcut : [c]>
  - Stops playing a music file.
- ▶ Next button < Shortcut : [→], [V]>
  - Plays the next item on the playlist.
- ▶ Volume control bar < Shortcut : Volume down [↓], [s], [wheel down] / Volume up [↑], [d], [wheel up]>
  - You can control volume by holding down and dragging your mouse left and right.
- ▶ Open/Close music playlist button < Shortcut : [Alt]+[L]>
  - Opens or closes the 'Music playlist' window.
- ▶ Lyrics
  - Displays the lyrics of a currently played song.

### Send file to device automatically

If you choose to send a file automatically, the items in the Send to device list are automatically sent to a device as soon as it is connected.

※ You can select a device to which to send a file in **Settings > Connected device > Set a device to which to send files**.

- 1) Click the Playlist and then the **Send to device** list on the submenu.
- 2) Drag & drop an item that you want to send to a device to the submenu.
- 3) Click the Send automatically tick box.
- 4) Connect the device.
- 5) When the **'Do you want to send the Send to device list automatically when the device is connected?'** pop-up appears, click the **Yes** button.
- 6) The items on the **'Send to device list'** have been sent to the device automatically.

### Send my ringtone

You can import a ringtone file to Media manager and send it to the mobile phone ringtone folder.

- 1) Connect mobile phone to PC in PC manager mode.
- 2) Open My Computer and drag & drop a ringtone file to Media manager.
- 3) Move the cursor onto the file, right-click it and select Device from the Send to device ringtone folder menu.
- 4) The file has been sent to the specified folder.

※ You can select and send multiple ringtone files. Also, you can select the **playlist** from the top menu and drag & drop it to the **My ringtone** folder to manage ringtone files only.

※ Ring tone files do not support drag & drop to the Device icon. You should use the **Send to device ringtone folder** menu to send them to the mobile phone.

### Sending to device podcast

Import music files to **Media manager** and send them to the mobile phone podcast.

- 1) Connect your mobile phone to the PC in MTP mode.
- 2) Open **My Computer** and drag & drop a music file to **Media manager**.
- 3) Move the cursor onto the file, right-click it and select Device from the **Send to device podcast** menu.
- 4) The file is sent to the mobile phone.

※ You can select multiple music files and send them all together.

### Delete missing files

If the music files are deleted or moved to another folder after being added, the links to their source files will not be available, preventing you from playing them.

**Delete missing files** deletes such files from the list.

- 1) Click the **Global menu** button on the left side of the submenu bar below the Application menu.
- 2) Click **Delete missing songs** from the **menu**.
- 3) The process window appears, deleting missing items from the list.
- 4) Missing songs have been deleted from the list.

### View type

Files can be displayed as a list view.

- **View as list** : Displays items in text format.

- **View as album list** : Groups items in an album and displays it as text with the album art image.

- **View as album cross** : Groups items in an album, allowing users to search them by release date, artist and genre, and displays the items in the album as texts.

## Search

Searches music files based on **Artist/Genre/Album/Release date**.

- Searches music files in a descending order of alphabets/Arabic numerals.
- If there is no selection displayed on the **submenu**, only the search result is shown.
- To go back to the previous screen, you need to click a desired menu or **submenu** after search.
- Disappears when the Contents menu or the **submenu** is clicked, and the search result is not kept.

- 1) **Artist/Genre/Album search** e.g.) Click the Search button after entering texts.
- 2) **Release date search** e.g.) Click the dropdown list, select the release date and then click the Search button to search from 2008 to 2009.

## Set sort items

### ■ Connected device

Automatically sends music files on the **Send to device list** to the device when it is connected.

- 1) Click the **Global menu** button on the left side of the submenu bar below the Application menu.
- 2) Click **Connected device** from the **menu**.
- 3) Set **Mode setting, Device to send to and Device location**.
  - ※ **New PC Studio** remembers and displays devices that have been connected more than once on the list. Select a device to which to send music files.
- 4) Click **OK** to save the settings.

### ■ Sort setting

Selects items you want to display on the Sort bar.

- 1) Click the **Global menu** button on the left side of the submenu bar below the Application menu.
- 2) Click **Sort setting** from the **menu**.
- 3) Select items you want to display on the Sort bar and click **OK**.
- 4) Only the selected items are displayed on the Sort bar.

※ Alternatively, move the cursor onto the Sort bar, right-click and add/delete a sort item in the list.

### ■ Auto scan

Clicking the Refresh button on the Global menu will import added files to Music manager, and remove deleted files from the Media manager list.

- 1) Click the Global menu button on the left side of the submenu bar below the Application menu.
- 2) Click **Auto scan** from the **menu**.
- 3) Select a file format to scan and specify the target folder.
  - ※ **My Documents > NPS folder** is set as the target folder by default, but you can change the target folder to your choice.
- 4) Click **OK** to save the settings.

## Playlist

### ■ Import playlist

- 1) Click the **Global menu** button on the left side of the submenu bar below the Application menu.
- 2) Click **Import playlist** from the **menu**.
  - ※ Alternatively, select **Playlist** on the top menu, move the cursor onto the submenu on the left, right-click, and click **Import playlist** from the **menu**.
- 3) When **My Computer** opens, select one or several (Control + Click) playlist data files and click the **Open** button.
  - ※ If the same playlist already exists in **Music manager**, a pop-up window may appear.
- 4) The **Import playlist** window opens, and the importing process starts.
- 5) When **Import playlist** is complete, click the **Done** button.
- 6) The **playlist** has been added to the **Playlist** submenu.

### ■ Export playlist

- 1) Select a **playlist**.
- 2) Click the **Global menu** button on the left side of the submenu bar below the Application menu.
  - ※ Alternatively, select **Playlist** on the top menu, move the cursor onto a desired **playlist** when the submenu appears on the left, right-click, and click **Export playlist** from the **menu**.
- 3) Click **Export playlist** from the **menu**.
- 4) When the Explorer opens, select a folder to store files and click **OK**.
- 5) The **Export playlist** window opens, and the exporting process starts.

- 6) When **Export playlist** is complete, click the **Done** button.
- 7) The **playlist** data files have been stored in the specified folder.

#### ■ **Make playlist**

- 1) Click **Playlist** on the top menu.
- 2) Click **Add** on the left submenu.
  - ※ Alternatively, move the cursor onto the submenu, right-click and click **Make playlist** from the **menu**.
- 3) When the input window appears on the submenu, enter a playlist name of your choice and press **Enter**.
  - ※ Alternatively, move the cursor outside of the input window and click once.
- 4) The **playlist** has been added.

#### ■ **Delete playlist**

- 1) Select a **playlist** you want to delete on the submenu.
- 2) Move the cursor onto the selected **playlist**, right-click and click **Delete playlist** from the **menu**.
- 3) Click **OK** when the pop-up appears.
- 4) The playlist has been deleted.

#### ■ **Rename playlist**

- 1) Select a **playlist** you want to rename on the submenu.
- 2) Move the cursor onto the selected **playlist**, right-click and click **Rename playlist** from the **menu**.
- 3) When the selected **playlist** is changed into the input window, enter a new name and press **Enter**.
  - ※ Alternatively, move the cursor outside of the input window and click once.
- 4) The **playlist** has been renamed.
  - ※ When you rename playlists, the menu order is rearranged in a descending order of alphabets or Arabic numerals.

#### ■ **Make quick playlist**

Automatically filters playlist names and adds music files to playlists.

You can add music files to the menu of a new playlist by scanning the music files and selecting specific attributes.

- 1) Select a **playlist** to store from the submenu of the top menu - **Playlist**.
- 2) Move the cursor onto the selected **playlist**, right-click and click **Make quick playlist** from the **menu**.
- 3) When the **Make quick playlist** window opens, enter a playlist name and use tags to select attributes of the **playlist**.
- 4) Click the **OK** button.
- 5) The new playlist has been created.
  - ※ You can check the new playlist from the submenu of **Playlist**.

#### ■ **Add item to playlist**

- 1) Select an item to add to the playlist from the list.
  - ※ Several items can be selected.
- 2) Move the cursor onto the selected item, right-click and select **Add to playlist** from the **menu**.
- 3) Select a desired **playlist** from the already created playlist menu.
  - ※ If there are no **playlists** created, you can click **New playlist** from the menu to make a new playlist and add the selected item automatically.
- 4) The item has been added to the **playlist**.

### **Change preference**

You can sort items to your choice by setting preference.

- 1) Move the cursor onto an item, right-click and click Change preference from the menu.
- 2) Select one from Score 5 to Score 1 (If you do not want to set preference, select Delete preference).
  - ※ Alternatively, move the cursor onto Preference on the list and drag it.
- 3) The preference has been set.

### **Get mood information**

Provides mood information on a music file added to the list.

- 1) Select an item from the list for mood information.
  - ※ To select several items, hold down **Ctrl+Shift** or **Ctrl+Alt** and click the items.
- 2) Move the cursor onto the item, right-click it and click **Get mood information**.
- 3) The mood title is added to the table on the list and the mood information of the item is displayed.



## AMG music information service

Detailed information (expert review, artist or band, similar albums, etc.) about music being played is provided at the right side of the music list in Media Manager.

※ To use this service, you must have a network connection.

- 1) Select an item from the list and play it.
  - 2) Music information is displayed at the right side.
- ※ Display speed will depend on the network connection.

## Music file information

### ■ Edit music information (ID3 tag)

Allows you to edit and manage the music information contained in a file.

- 1) Move the cursor onto an item you want, right-click it and click **File information** from the menu.  
※ **To set the preferences** without opening the Edit file information window, right-click and select **Preferences**.
- 2) To add an album art, move the cursor onto the album art area, right-click and click **Add album art**.
- 3) Select an image file in Explorer and click **OK**.
- 4) Edit the items you want to change.
- 5) Click the **OK** button.
- 6) **The File information** is edited.

### ■ Auto-update music information (ID3 tags)

Automatically updates music files in the list to provide more accurate album art and data.

- 1) Select an item from the list for the **music information** update.  
※ To select several items, hold down **Ctrl+Shift** or **Ctrl+Alt** and click the items.
- 2) Move the cursor onto the item, right-click it and click **Update music information**.
- 3) The **Update music information** window appears and the update process starts.
- 4) Click the **OK** button after the update process completes.
- 5) You can check the updated information in **File information**.  
※ You can update music information of all items in the list automatically by clicking the **Update All Music Information** button at the top of Music Manager.  
※ Note that once an item is updated, you cannot restore the previous information.

## Get CD information

Gets the album name, artist and track information for an audio CD.

- 1) Insert an audio CD.
- 2) Click the **CD** button at the right side of the top menu.
- 3) Check the audio CD track list (Track 1, Track 2, etc. are displayed by default).
- 4) Click the **Get CD information** button.
- 5) The album name, artist and track titles of the audio CD are updated and displayed.  
※ If the **AMG Database** does not contain information for the CD, you can edit the CD information and send it to **AMG**.  
The sent data helps **AMG** collect information about CDs that are not yet catalogued.

## Set list sorting

Selects a sorting type of play items on the playlist.

- 1) Select sorting criteria on the **Sort bar** at the top of the list.
- 2) The items are sorted automatically according to the sorting criteria.  
※ If the triangle points downwards, the items are sorted in a descending order, if the triangle points upwards, the items are sorted in an ascending order.  
※ You cannot drag & drop an item to change the order after sorting.

## 5.20.02. Photo manager

### Overview

Photo manager allows users to manage, store and share photo files in PC as well as view and edit files stored in Samsung mobile phones, camcorders and digital cameras.

- ※ Supported formats: BMP, JPG (JPEG), GIF, A-GIF, PNG, WBMP, TIF
- ※ Supported formats for mobile phone file transfer in Korea: BMP, JPG (JPEG), GIF, A-GIF, PNG, WBMP, TIF

## Application structure

### 1) Top menu button

- Global menu
- All files
- Album
- Time
- Keyword
- Preference

### 2) Global menu button

- Refresh
- Import file from PC
- Import folder from PC
- Send to device
- Import device file
- Delete missing songs
- Photo editor
- Slide maker
- View slide
- Add to disk burning
- Print
- Settings

### 3) Submenu button

- All files
- Album submenu
- Time submenu
- Keyword submenu
- Preference submenu

## View type

Provides Preview, View details and View rotating slide functions for photo files.

- **Preview** : Displays files as thumbnails. The number of files displayed on one screen differs depending on thumbnail size.

- **View details** : Displays thumbnails as well as detailed file information.

- **View rotating slide** : Displays files rotating around the centre point.

## Search

Searches photo files based on **File name/Time/Keyword**.

- Searches photo files in a descending order of alphabets/Arabic numerals.

- If there are no groups displayed on the **submenu**, only the search result is shown.

- To go back to the previous screen, you need to click a desired menu or **submenu** after search.

- The search result is not kept.

1) **File name search** e.g.) Click the Search button after entering texts

2) **Time search** e.g.) Click the calendar, select the dates and click the Search button to search from August 25, 2008 to September 19, 2008

3) **Keyword search** e.g.) Click the Search button after entering texts

## Sort

Selects a sorting type of items displayed on the list.

1) Select desired sorting criteria among **File name/Time/Size** on the **Sort list** at the top of the list.

2) The items are sorted automatically according to the sorting criteria.

## Basket/Function toolbar area

**Basket** is a space used to temporarily store files on the list.

※ On the initial screen, only one file is included in **Basket** by default.

1) Use the **Open basket** button to open the Basket area.

2) Select files in the Viewer, and drag & drop them to the **Basket** area.

※ File options in the **Basket** area

1) **View slide**: Displays files in the Basket as a slide.

## Photo editor

### ■ Start global photo editor

1) Select **Photo editor** from the **global menu**.  
2) Photo editor will load up.

### ■ Start file photo editor

1) Move the cursor onto a file, right-click and select **Photo editor** from the menu.  
2) Photo editor will load up.

### ■ Start basket photo editor

1) Select **Photo editor** from the **function toolbar**.  
2) Photo editor will load up.

## Slide maker

### ■ Start global slide maker

1) Select **Slide maker** from the **global menu**.  
2) Slide maker will load up.

### ■ Start basket slide maker

1) Select **Slide maker** from the **function toolbar**.  
2) Slide maker will load up.

## View slide

### ■ View global slide

1) Select **View slide** from the **global menu**.  
2) You can view the slide in full screen in the sorting order.

### ■ View group slide

1) Execute **View slide** on the **Group menu**.  
2) You can view the slide in full screen in the group sorting order.

### ■ View basket slide

1) Execute **View slide** in the **Function toolbar** area.  
2) You can view the slide in full screen in the given sorting order.

## Album

### ■ Make album

1) Click **Album** on the top menu.  
2) Click **Add** on the submenu.  
※ Alternatively, move the cursor onto the submenu, right-click and click **Make album** from the menu.  
3) When the input window appears on the submenu, enter an **album** name of your choice and click **OK**.  
4) The album has been added.

### ■ Delete album

1) Select an **album** you want to delete on the submenu.  
2) Move the cursor onto the selected **album**, right-click and click **Delete album** from the menu.  
3) Click **OK** when the pop-up appears.  
4) The album has been deleted.

### ■ Rename album

1) Select an **album** you want to rename on the submenu.

- 2) Move the cursor onto the selected **album**, right-click and click **Rename album** from the **menu**.
- 3) When the selected **album** is changed into the input window, enter a new name and press Enter.  
※ Alternatively, move the cursor outside of the input window and click once.
- 4) The **album** has been renamed.  
※ When you rename albums, the menu order is rearranged in a descending order of alphabets or Arabic numerals.

#### ■ Store album

Stores (or exports) album files by title to a specified folder on PC.

- 1) Select an **album** you want to store from the submenu of **Album**.
- 2) Move the cursor onto the selected **album**, right-click and click **Store album** from the **menu**.
- 3) When My Computer opens, make a new folder or select an existing folder to store the files.
- 4) Click the **Store** button.
- 5) All items in the **album** are stored in the specified folder.

#### ■ Make quick album

Automatically filters album names and adds files to albums.

- 1) Select an **album** to store from the submenu of the top menu - Album.
- 2) Move the cursor onto the selected **album**, right-click and click **Make quick album** from the **menu**.
- 3) When the **Make quick album** window opens, enter an album name and select attributes of the album.
- 4) Click the **OK** button.
- 5) The new album has been created.

#### ■ Add item to album

- 1) Select an item to add to the album from the list.  
※ Several items can be selected.
- 2) Move the cursor onto the selected item, right-click and select **Add to album** from the **menu**.
- 3) Select a desired **album** from the already created album menu.  
※ If there are no **albums** created, you can click **New album** from the menu to make a new album and add the selected item automatically.
- 4) The item has been added to the **album**.

### Keyword/Time/Preference

#### ■ Configure Keyword menu

The **Keyword** menu lists up files with a specific keyword.

- 1) Move the cursor onto a file and right-click.
- 2) Click **Edit keyword** from the menu to edit the keyword.  
※ Use the **Batch edit keywords** menu of the Group menu to apply to all files in the group.  
※ A file with no keyword is classified as **No information** on the keyword **submenu**.

#### ■ Configure Time menu

The **Time** menu sorts and lists up files by date automatically based on their creation times.

- ※ Users are not allowed to specify, delete, copy or move the Time menu.

#### Configure Preference menu

The **Preference** menu classifies and lists up files based on scores set by users.

- 1) Move the cursor onto a file and right-click it.
- 2) Click **Change preference** from the menu to select a score.  
※ A file is classified as **No information** when no score is selected or the file grade is deleted.

### Manage files by group

Click the Group menu on the right side of a group name to display the **Group menu**.

#### ■ Batch rename files

- 1) Click **Batch rename files** on the Group menu to display the name input pop-up window.
- 2) Enter a new name and click the **OK** button.
- 3) All files in the group have been renamed.  
※ Example: ABC\_001.avi, ABC\_002.avi...

#### ■ **Batch resize**

- 1) Click **Batch resize** on the Group menu to display the size input pop-up window.
  - 2) Select or enter a new size and click the **OK** button.
  - 3) All files in the group have been resized.
- ※ Using the **Keep source file** option will maintain the source file while creating a resized file.

#### ■ **Add to album**

- 1) Click **Add to album** on the Group menu and select a desired album from the album name list to add the files in the current album group to the album.
- ※ You can make a new album by using the **New album** menu of **Add to album**.

#### ■ **Batch edit keywords**

- 1) Click **Batch edit keywords** on the Group menu to display the keyword input pop-up window.
- 2) Entering a keyword into the pop-up window will apply it to all files in the group.

#### ■ **Batch modify preferences**

- 1) Select a desired score from the score list of **Batch modify preferences** on the Group menu to modify the scores of all items in the group.
- ※ A file is classified as **No information** when no score is selected or the file grade is deleted.

## 5.20.03. Video manager

### Overview

Video manager allows users to manage, store, share and play video files on PC as well as view and edit video files stored in Samsung mobile phones, camcorders and digital cameras.

※ Supported formats: 3GP, 3G2, AVI, MP4, MPG (MPEG), DIVX, ASF, WMV, SKM, K3G

※ Supported formats for mobile phone file transfer in Korea: AVI, 3GP, SKM, MP4, K3G

### Application structure

#### 1) **Top menu button**

- Global menu
- All videos
- Album
- Time
- Keyword
- Preference

#### 2) **Global menu button**

- Refresh
- Import file from PC
- Import folder from PC
- Send to device
- Import device file
- Delete missing files
- Video editor
- Play selected file
- Add to disc burning
- Settings

#### 3) **Submenu button**

- **All files:** Lists up and displays all files of the Viewer in the Contents area as thumbnails.
- **Album submenu:** Consists of the **Recently added** menu, where you can view recently added files, and the user created album menu.
- **Time submenu:** Lists up video files based on the creation time tags (date information). Users are not allowed to edit or delete the Time submenu.
- **Keyword submenu:** Groups video files based on keywords that users have given to the files. A file can have many keywords. In this case, several keyword menus are created and one file belongs to the keyword menus.
- **Preference submenu:** Users give proper scores to files that they prefer and the files are listed up based on the scores.

## Basket/Function toolbar area

※ On the initial screen, only one file is included in **Basket** by default.

- 1) Drag up the **Slide** button to the Contents area (**Basket** is an area where you edit files displayed on screen).
- 2) Select files in the Video viewer, and drag & drop them to the **Basket** area.

## Converting

Converts a file into a different extension while keeping its source video in Basket.

- 1) Drag & drop a file you want to convert to **Basket**.
  - 2) Press the **Convert** button to start **Video converter**.
  - 3) Video files in **Basket** are converted and saved in the NPS folder. The files are not overwritten and new files with the same names but different resolutions are created.
- ※ You can specify a folder to save converted files to before converting. If you save converted files in the default folder, you can check them in the **Recently added** menu immediately.

## View type

Provides Preview, View details and View rotating slide functions for video files.

- **Preview**: The number of files displayed on one screen differs depending on thumbnail size.

Viewer controller is located at the bottom-right corner. You can adjust thumbnail size to zoom in or zoom out thumbnails. This time, View thumbnail details are disabled. Moving the controller to the left will make the size smaller and moving it to the right will make the size larger.

- **View details**: Double-click a file or select Play from the context menu to play it in full screen.

- **View rotating slide**: The screen rotates around the centre point to play the screen view in the foreground. Moving the mouse onto another thumbnail will move the desired screen to the foreground.

## Search

Searches video files based on **File name/Time/Keyword**.

- Searches video files in a descending order of alphabets/Arabic numerals.

- If there is no selection displayed on the **submenu**, only the search result is shown.

- To go back to the previous screen, you need to click a desired menu or **submenu** after search.

- Disappears when the Application menu or the **submenu** is clicked, and the search result is not kept.

- 1) **File name search** e.g.) Click the Search button after entering texts
- 2) **Time search** e.g.) Click the calendar, select the dates and click the Search button to search from August 25, 2008 to September 19, 2008
- 3) **Keyword search** e.g.) Click the Search button after entering texts

## Sort

Selects a sorting type of items displayed on the playlist.

- 1) Select desired sorting criteria among **File name/Time/Size** on the **Sort dropdown list** at the top of the list.
- 2) The items are sorted automatically according to the sorting criteria.

## Execute video file

### ■ Play one selected file

You can select one file and execute Play to display the full screen viewer.

### ■ Play group files

- 1) Right-click a group name on the **Album menu > Submenu >** user created menu to display the **Group context menu**.
- 2) Click **Play** on the **Group context menu** to play group files on the menu. The video files are played in the order listed in the group.
- 3) The files are played in full screen in Video manager.

## Video editor

### ■ Start global video editor

- 1) Select **Video editor** from the **global menu**.
- 2) Video editor will load up.

#### ■ Start file video editor

- 1) Move the cursor onto a file, right-click and select **Video editor** from the menu.
- 2) Video editor will load up.

#### ■ Start basket video editor

- 1) Select **Video editor** from the **function toolbar**.
- 2) Video editor will load up.

## Album

#### ■ Make album

- 1) Click **Album** on the top menu.
- 2) Click **Add** on the left submenu.
  - ※ Alternatively, move the cursor onto the submenu, right-click and click **Make album** from the **menu**.
- 3) When the input window appears on the submenu, enter an **album** name of your choice and press **Enter**.
  - ※ Alternatively, move the cursor outside of the input window and click once.
- 4) The **album** has been added.

#### ■ Delete album

- 1) Select an **album** you want to delete on the submenu.
- 2) Move the cursor onto the selected **album**, right-click and click **Delete album** from the **menu**.
- 3) Click **OK** when the pop-up appears.
- 4) The **album** has been deleted.

#### ■ Rename album

- 1) Select an **album** you want to rename on the submenu.
- 2) Move the cursor onto the selected **album**, right-click and click **Rename album** from the **menu**.
- 3) When the selected **album** is changed into the input window, enter a new name and press Enter.
  - ※ Alternatively, move the cursor outside of the input window and click once.
- 4) The **album** has been renamed.
  - ※ When you rename albums, the menu order is rearranged in a descending order of alphabets or Arabic numerals.

#### ■ Store album

Stores (or exports) album video files by title to a specified folder on PC.

- 1) Select an **album** to store from the submenu of the top menu - **Album**.
- 2) Move the cursor onto the selected **album**, right-click and click **Store album** from the **menu**.
- 3) When My Computer opens, make a new folder or select an existing folder to store the files.
- 4) Click the **OK** button.
- 5) All items in the **album** are stored in the specified folder.

#### ■ Make quick album

Automatically filters album names and adds music files to albums.

You can add video files to the menu of a new album by scanning the video files and selecting specific attributes.

- 1) Select an **album** to store from the submenu of the top menu - **Album**.
- 2) Move the cursor onto the selected **album**, right-click and click **Make quick album** from the **menu**.
- 3) When the **Make quick album** window opens, enter an album name and use tags to select attributes of the **album**.
- 4) Click the **OK** button.
- 5) The new album has been created.
  - ※ You can check the new playlist from the submenu of **Album**.

#### ■ Add item to album

- 1) Select an item to add to the album from the list.
  - ※ Several items can be selected.
- 2) Move the cursor onto the selected item, right-click and select **Add to album** from the **menu**.
- 3) Select a desired **album** from the already created album menu.
  - ※ If there are no **albums** created, you can click **New album** from the menu to make a new album and add the selected item automatically.
- 4) The item has been added to the **album**.

## Keyword/Time/Preference

### ■ Keyword menu structure

**Keyword** menu lists up video files with a specific keyword.

- 1) Move the cursor onto an item, right-click and click Edit keyword from the menu.
- 2) When one video file has more than 2-3 keywords, more than 2-3 keyword menus are created on the keyword contents viewer screen and the files are displayed on the menus.
- 3) Video files with no keyword in Video viewer are classified as **No information** on the keyword **submenu**.

### ■ Configure time menu

- 1) **Time** menu sorts and lists up files by date automatically based on their creation time tags.  
※ Users are not allowed to specify, delete, copy or move the Time menu.

### ■ Configure Preference menu

**Preference** menu allows users to give proper scores to video files that they prefer and the files are listed up based on the scores.

### ■ Change preference

You can sort items to your choice by setting preference.

- 1) Move the cursor onto an item, right-click and click Change preference from the menu.
- 2) Select one from Score 5 to Score 1 (If you do not want to set preference, select Delete preference).
- 3) The preference has been set.

## Manage files by group

Right-click a group name on the **Album menu > Submenu >** user created menu to display the **Group context menu**.

### ■ Batch rename files

- 1) Move the cursor onto a group name, right-click and click Batch rename files from the menu.
- 2) When the name input pop-up opens, enter a new name and click the **OK** button.
- 3) All files in the group have been renamed.  
※ Example: ABC\_001.avi, ABC\_002.avi...

### ■ Add to album

- 1) Move the cursor onto a group name, right-click and click Add to album from the menu.
- 2) Album names created by users are listed up in the Album menu.
- 3) Select a desired album from the album name list to add the files in the current album group to the album.

### ■ Edit keyword

- 1) Move the cursor onto an item, right-click and click Edit keyword from the menu.
- 2) The Edit keyword pop-up window opens.
- 3) Entering a keyword will apply it to all files in the group.



## 05 Application description

### 5.21. Media manager > Photo editor

#### Overview

**Photo editor** allows users to edit photo files registered to Media manager. To start **Photo editor**, click the Photo editor button on the function bar of Media manager stage > Photo.

- ※ Some programs may not be available depending on the country setting.
- ※ Supported formats: BMP, JPG (JPEG), GIF, PNG, WBMP, TIF
- ※ Export file formats: BMP, JPG (JPEG), GIF, PNG, WBMP, TIF

#### Screen description

- 1) Top area
  - ▶ The application name, window function icon and menu button are located here.
- 2) Basket area
  - ▶ Display photos added to the basket in Media manager > Photo.
- 3) Viewer area on the left
  - ▶ Display files selected in the basket.
- 4) Edit area on the right
  - ▶ Modify, decorate, save and print photos.

#### Basket menu

Add or delete photo files to or from the basket.

- Add photo: Click the **Add** button to open the Import pop-up window, and then select a photo file to add to the basket.
- Delete photo: Select a photo file in the basket, and then click the **Delete** button to delete it from the basket.

#### Function menu

- Undo button: Cancel the last operation and move back to the previous one.
- Redo button: Cancel the last Undo operation.
- Reset button: Cancel the editing operation and move back to the initial stage.
- View information button: Display information about the file shown on the edit screen.
- Source comparison button: Compare the edited version with the source file.
- Fit to area button: Fit the photo size displayed to the edit area.
- Fit to actual size button: Fit the photo size displayed to the actual size.
- Zoom in/out slide bar: Adjust the photo size displayed in the edit area.
- Save button: Save the edited photo with the same path and name as the source file.
- Save as button: Enter a path and name for the edited photo.
- Print button: Open the Print pop-up window.

#### Edit function

- Click each function menu to expand and display detailed functions.
- Click the **Apply** button to apply what was entered and modified. Click the **Cancel** button to cancel what was entered.

#### Modify function/strong>

- Rotate: If you click the top-bottom inversion or the left-right inversion, the photo is inverted based on the centre point. If you click left or right, the photo rotates by 90 degrees with each click.
- Remove red eye: Adjust the slide bar to remove the red eye. Select an area and move the slide bar left or right to remove the red eye.
- Adjust brightness: Adjust the saturation, brightness and contrast slide bars left or right.
- Effects: Use filters to apply effects. Select a desired effect to open the pop-up window, and then adjust the slide bar left or right. Click the **OK** button from the pop-up window to apply the effect. Click the **Cancel** button to cancel the effect. Click the **Reset** button to move the slide bar back to the initial stage.
- Cut: Select and cut a desired area. Move or resize the area to cut and click the **Apply** button.
- Resize: Resize the photo. Enter a desired size and click the **Apply** button.

#### Decorate function

- 1) Paint
  - ▶ Select a paint tool, color and size, and then paint the object. Click the **Apply** button to apply the painting.

※ Tool description

Pencil: Sharp borderline

Air brush: Spray in a specific pattern.

Brush: Smooth borderline

Paint can: Paint a selected area with the same color.

Rectangle: Make a rectangle and paint it.

Circle: Make a circle and paint it.

Polygon: Make a polygon and paint it.

Eraser: Make an object white.

Move: Move the painted object (you cannot move the object after clicking the Apply button).

2) Enter text

▶ Click a desired location and enter a text. Double-click the border to move the location and enter the text, and then click the **Apply** button.

3) Sticker

▶ Select a sticker and click a location on the photo to apply it. Click the sticker border to move the location and change the size, and then click the **Apply** button.

4) Frame

▶ Select a desired frame and click the **Apply** button.

### Print function

1) Check a photo to print on Preview of the Print page.

2) Select the Print button.

3) Print the photo.

## 05 Application description

### 5.22. Media manager > Slide maker

#### Overview

**Slide maker** allows users to make moving files using files registered to Media manager > Photo. To start Slide maker, click the **Slide maker** button on the function bar of Media manager stage > Photo

- ※ Some programs may not be available depending on the country setting.
- ※ Supported format: BMP, JPG (JPEG), GIF, PNG, WBMP, TIF
- ※ Export file format: GIF

#### Screen description

- 1) Top area
  - ▶ The application name, window function icon, menu and exit button are located here.
- 2) Basket area
  - ▶ Photos added to the basket in Media manager > Photo are displayed here.
  - ▶ Move left and right (scroll).
  - ▶ Add or delete photos.
  - ▶ Slide settings are displayed here.
  - ▶ Select slides and change their order.
  - ▶ The maximum number of slides is 20.
  - ※ The number of usable pages differs depending on format.
- 3) Slide page area
  - ▶ The slide selected in the basket is displayed here.
  - ▶ Adjust photo size and location.
- 4) Function icon area
  - ▶ Use the **Fit to area** button, the **Fit to actual size** button and the Zoom in/out slide bar to adjust photo size.
  - ▶ You can change slide size, slide background color and format information, and save or send the slide to a device.

#### Slide maker

- 1) Start
  - ▶ Click the **Slide maker** button on the function toolbar of Media manager > Photo.
  - ▶ When starting Slide maker, photos in the basket are displayed.
  - ※ When the slide is empty, Slide maker is executed with its basket empty.
- 2) Add slide
  - ▶ Click the **Add slide** button in the basket area, select a group and photo files in the **Import** window, and then click the **OK** button.
  - ※ You cannot drag & drop files from the Device window and My Computer.
  - ※ ASL files cannot be imported.
- 3) Delete slide
  - ▶ Select a photo and click the **Delete slide** button to delete it from the basket.
- 4) Change slide order
  - ▶ Select a slide of which you want to change the order, and then drag & drop photos in the desired order to change the slide order.
- 5) Play slide
  - ▶ Click the **Play slide** button.
  - ※ The slide is displayed in the pop-up window (displayed in the actual set size).
  - ※ Click the **[X]** button to close the pop-up window during playback.
- 6) Adjust size
  - ▶ Fit to area: Display a photo fitted to the set area.
  - ▶ Fit to actual size: Display a photo kept to its actual size.
  - ▶ Zoom in/out: You can move the slide bar to change photo size.
  - ▶ Move photo: You can drag & drop a photo to select what to display in the area.
- 7) Set Transition effect
  - ▶ Click the **Transition effect** button to set transition effect, and then click the **OK** button.
  - ※ **This function becomes available when selecting Korea in the New PC Studio settings and changing the type to Mobile phone slide.**
- 8) Set changing time
  - ▶ Click the **Time** button to set changing time, and then click the **OK** button.

## Settings

### 1) Slide size

- ▶ Select a slide size within the specified range.

### 2) Slide background color

- ▶ Select a color that fills any possible space between the slide photo and the frame.

### 3) Type

- ▶ Mobile phone slide: A type to make ASL files available only for mobile phones used in Korea.

※ **Mobile phone slide** is not displayed when the country setting is not Korea.

※ If Mobile phone slide is selected, the **Send to device** button appears. Saving to the PC is not supported.

- ▶ GIF animation: A type to make moving GIF files.

- ▶ My image: A format available only for mobile phones used in Korea

※ My image will not be available if the country setting is set to countries other than Korea.

※ If My image is selected, the **Send to device** button will appear. Saving to the PC is not supported.

## 05 Application description

### 5.23. Media manager > Video editor

#### Overview

Video editor allows users to make or edit a video file using files registered to Media manager > Video.

To start Video editor, click the **Video editor** button on the function bar of Media Manager stage > Video.

Video editor allows you to import a file to edit to the basket and edit it with various functions from the function toolbar.

You can also attach video files in series, apply video effects, adjust video length and use the sound text function.

※ Some programs may not be available depending on the country setting.

※ Supported formats: 3GP, 3G2, AVI, MP4, MPG (MPEG), DIVX, ASF, WMV, SKM, K3G

※ Export file formats: AVI, 3GP, SKM, MP4, K3G

#### Screen description

##### 1) Top area

▶ The application name, window function icon, menu and exit button are located here.

##### 2) Effect area

▶ Select an effect to apply from the transition effect.

▶ Select an effect to apply from the theme effects.

▶ Adjust brightness, contrast and saturation in the image compensation.

▶ Apply subtitle and title.

##### 3) Play area

▶ Check what was edited.

##### 4) Contents area

▶ Import video, photo and music files.

▶ Provide the preview function of added contents.

##### 5) Edit area

▶ Increase or decrease the timeline.

▶ Apply a contents file to the timeline.

##### 6) Timeline area

▶ Manage video files, transition effect, sound and subtitle timeline.

##### 7) Common area

▶ The Settings, Save, Send to device and Burn CD icons are located here.

#### How to use Video editor

##### 1) Start

▶ Click Menu > Edit video to start Video editor. Alternatively, click the Video editor button.

※ **When starting Video editor**

▶ A selected file is included in the video editor clip.

▶ When clicking the Video editor button in the Common area at the bottom of Media manager > Video, the files in the basket are included in the clip.

##### 2) Import file

▶ To import a file in the Full screen tab menu

: Go to the Select file context menu > Select contents > Open the Import pop-up.

▶ To import a file in the tab menu for each conten:

: Open the Import window for the content

#### Apply effects

##### 1) Transition effect

▶ Barn, Blinds, Checkerboard, Fade, Gradient wipe, Insert, Iris, Pixelate, Radial wipe, Slide, Spiral, Stretch and Strips effects are available.

▶ Select an effect and click the **Add** button to display its icon in the transition effect of the timeline.

▶ You can drag & drop an effect to the timeline.

##### 2) Theme effects

▶ Old, Music video, Sepia, Green, Blur, Noise, Sharpen, Gray and Red effects are available.

▶ Select an effect and click the **Apply** button to apply it to the selected clip of the timeline.

▶ Click the **Reset** button to cancel the theme effect applied to the selected clip of the timeline.

##### 3) Image compensation

▶ Adjust brightness, contrast and saturation

- ▶ Move the slide bar left or right and click the **Apply** button. Click the **Reset** button to move the slide bar to 0.
- 4) Subtitle
- ▶ Select font, font size, color and location.
  - ▶ Enter a text in the text input window and click the **Apply** button.
- 5) Title (Opening/Ending)
- ▶ Enter a text in the text input window and click the **Apply** button.
  - ▶ Opening: The text is inputted at the front of the timeline.
  - ▶ Ending: The text is inputted at the end of the timeline.

## Contents area

- 1) Select file tab
  - ▶ View all imported files: Imported photo, video and music files are displayed.
- 2) List of imported media display area
  - ▶ The files are listed in each tab.
- 3) Preview
  - ▶ Display contents in the preview area.
- 4) Buttons for preview
  - ▶ The Play, Stop, Previous and Next buttons are available.

## Timeline

**Timeline** makes it easier to edit videos.

Undo cancels the last operation and moves back to the previous one while Redo cancels the last Undo operation.

- 1) Add file to timeline
  - ▶ Select a file to add from the contents > Drag & drop the file to the timeline area.
  - ▶ If there is a file for each content in the timeline, a new file is added to the last content in the timeline.
- 2) Use Video 1 and Video 2
  - ▶ Drag & drop files to Video 1 and Video 2.
  - ▶ Select a desired transition effect and setting, and add the files to the timeline. You can adjust time by moving both ends of the video border left or right.
- 3) Increase/Decrease
  - ▶ Use the [+] and [-] buttons to adjust the timeline.
  - ▶ You can increase or decrease the timeline.
- 4) Adjust clip length
  - ▶ Click the front or end of the clip, and move your mouse to adjust the clip length.
- 5) Copy, Move, Delete
  - ▶ Copy: Select a clip to copy. Press [Ctrl]+C to copy the clip and [Ctrl]+V to paste it.
  - ▶ If you click a specific file in the timeline and activate it, the copied file is pasted to the end of the selected file.
  - ▶ If you do not specify a file, the copied file is pasted to the end of the timeline.
  - ▶ Move: Select a clip, and drag & drop it to a desired location.
  - ▶ Delete: Select a clip to delete. Press [Delete] on the keyboard to delete it.
- 6) Manage sound
  - ▶ Drag & drop a file from the contents.
- 7) Save video
  - ▶ Click the **Save** button at the bottom > Select a location and format.

(A file is saved based on the preset options.)

  - ▶ Check the saved file.
- 8) Export to device
  - ▶ Click the **Send to device** button at the bottom > The Device window opens and the file is sent.
- 9) CD burning
  - ▶ Click the **Burn CD** button at the bottom > The file is added to the disk burning program list.

## Set file information

- ▶ Click the **File information** button at the bottom > Select file format, screen size, video quality and audio quality in the [Video settings] pop-up window.

## 05 Application description

### 5.24. Timetable

#### Overview

Timetable allows users to add, edit and delete school/private institute timetable contents in a mobile phone in real time.

- ※ If you select a mobile phone that does not support private institute timetables from the mobile phone list, you cannot access any private institute timetables.
- ※ Some programs may not be available depending on the country setting.

#### Select mobile phone

1) Click the mobile phone selection box with connection location and device name on it.

Example: (Port1) SPH-W5700

2) Click a timetable item to manage in the expanded selection box.

▶ When a mobile phone that supports the Timetable is connected, it is automatically detected and displayed in the mobile selection list.

For more information on device search, refer to [\[4.4. Device search\]](#).

▶ When a mobile phone that supports the Timetable is connected and the program does not recognize it, check the following:

1. Is the device turned on?
2. Is the cable connected properly?

#### Select school/private institute timetable

1) Click the School tab to go to the school timetable.

2) Click the Private institute tab to go to the private institute timetable.

#### School timetable

##### ■ Add subject

1) Click the Add subject icon at the bottom of the Timetable.

2) When the Add subject window appears, enter the required information and click the OK button. Then, the subject is added to the Timetable.

※ To add the same item several times, take steps 1 and 2 first, select the added subject, press Ctrl+C, click an area to add the subject, and then press Ctrl+V.

##### ■ Edit subject

1) Double-click an item to edit in the Timetable.

※ Alternatively, move the cursor onto the item, right-click it and click the Edit menu command.

2) When the Edit subject window appears, edit the information and click the OK button to complete the task.

※ Please be careful in that actual mobile phone timetable data might be deleted.

##### ■ Delete subject

1) Select a subject to delete and click the Delete icon at the bottom of the Timetable.

※ Alternatively, move the cursor onto the item, right-click it and click the Delete menu command.

2) When the Delete pop-up window appears, click Yes. The subject is deleted from the list.

※ Please be careful that actual mobile phone timetable data might be deleted.

3) To delete several items, select them with the Ctrl key held down, and then click the Delete icon at the bottom of the list.

##### ■ Move subject

1) Select a subject to move in the Timetable.

※ You can select several items with the Ctrl key held down.

2) Drag & drop the subject to an empty area.

※ If you drag & drop the subject to an area filled with another subject, the existing data is deleted.

※ You cannot move subject data added to the private institute timetable to the school timetable..

##### ■ Time settings

1) Click the Time settings icon at the bottom of the Timetable.

2) When the Time settings window appears, enter the required information and click the OK button. The time in the

Timetable is edited.

※ Please be careful in that actual mobile phone timetable data might be edited.

## Private institute timetable

### ■ Add subject

- 1) Click the Add Subject icon at the bottom of the Timetable.
  - 2) When the Add subject window appears, enter the required information and click the OK button. Subjects are added to earlier classes in order.
- ※ You cannot select one or more subjects occurring at the same time on the same day.

### ■ Edit subject

- 1) Double-click an item to edit in the Timetable.
- ※ Alternatively, move the cursor onto the item, right-click it and click the Edit menu.
- 2) When the Edit subject window appears, edit the information and click the OK button to complete the task.
- ※ Please be careful in that actual mobile phone timetable data might be edited.

### ■ Delete subject

- 1) Select a subject to delete and click the Delete icon at the bottom of the Timetable.
- ※ Alternatively, move the cursor onto the item, right-click it and click the Edit menu.
- 2) When the Delete pop-up window appears, click Yes. The subject is deleted from the list.
- ※ Please be careful in that actual mobile phone timetable data might be deleted.
- 3) To delete several items, select them with the Ctrl key held down, and then click the Delete icon at the bottom of the list.

### ■ Move subject

- 1) Select a subject to move in the Timetable.
- ※ You cannot select multiple subjects.
- 2) Drag & drop the subject to an empty area. Subjects on the day are sorted by time.
- ※ You cannot move a subject to a day when another subject occurs at the same time.
- ※ You cannot move the subject data added to the private institute timetable to the school timetable.

## Import

When the Timetable is exported and saved as a data file, you can import and check the Timetable even though the mobile phone is not connected.

- 1) Click Import on the menu at the top of the Timetable.
- 2) When the Import window appears, click the Browse button to select a file to import and click the Open button.
- 3) The file to import is added. Click the Next button.
- 4) The added timetable file starts being imported. When the task is completed, the Finish button is activated.
- 5) Click the Finish button to check the data imported from the Timetable.

## Export

- 1) Click Export on the menu at the top of the Timetable.
- 2) When the Export window appears, click the Browse button to select a destination path and click the Save button.
- 3) The destination path is added. Click the Next button.
- 4) The timetable file starts being exported to the computer. When the task is completed, the Finish button is activated.
- 5) Click the Finish button to close the window. The timetable file is then created at the specified path.



## 05 Application description

### 5.25. Voice memo

#### Overview

Voice memo allows users to import files from a mobile phone to PC, as well as manage and play them in New PC Studio.

※ Some programs may not be available depending on the country setting.

#### Import Voice memo file

1) Click the Phone to PC button.

※ When several devices are connected, select a mobile phone to import a voice memo file. To import all voice memo files, select Import All.

※ You can only import a voice memo file from mobile phones that support Voice memo.

2) Select a folder to save the file in the Explorer for My Computer, and click the Open button.

3) Click the OK button after the voice memo is imported from your mobile phone.

※ If the saving locations are different, several of the same files can exist in the list.

#### Open file

1) Click Open file on the menu at the top of the Voice memo.

2) When the Explorer for My Computer appears, select a file to import and click the Open button.

※ You can select a desired file type from the dropdown list.

3) Selecting a file type will register the file to the list.

#### Delete file

1) Select a voice memo file to delete and click the Delete icon at the bottom of Voice memo.

2) When the Delete window appears, click Yes to delete it from the list.

※ The source file is not deleted.

#### Play

1) Double-click a voice memo file you want to play from the list.

※ Alternatively, move the cursor onto the file, right-click it and click the Play menu.

※ You cannot play a voice memo file if its source file is deleted, or if its file name/path has changed.

#### Open Source Folder

1) Move the cursor onto the file, right-click it and click the Open source folder menu.

2) The folder containing the source folder opens in the Explorer for My Computer.

※ The source file cannot be found if the source file is deleted, or if the file name/path has changed.

#### Rename

1) Move the cursor onto the file, right-click it and click the Rename menu.

2) When the file name changes in the Input window, edit the name, move the cursor to other areas and click as needed.

3) The file has been renamed.

#### Sort list

1) Click one of the sorting items such as date, name and time on the Sort bar to sort the list based on the item.

※ Making one more click will automatically switch the order from descending to ascending, or vice versa.

## 05 Application description

### 5.26. Backup and restore

#### Overview

**Backup and restore** allows users to back up data in preparation for any data loss caused by mobile phone change or damage and to restore the backup data when necessary.

It allows users to keep their own data to help restore their mobile phones easily without the need to go to service centers.

※ Some programs may not be available depending on the country setting.

#### Start device

- 1) Connect the device and click the **Backup & Restore** icon in the toolbox.
- 2) Select the mobile phone type that you use.
- 3) Select the **Backup (or Restore)** tab and click the **Backup (or Restore)** button at the bottom.

#### Backup process

Follow the warnings when starting the backup process. If any issues should arise, follow the message on the screen.

##### Step 1) Warnings

Read the warnings about the backup process thoroughly. Select "I have read all of the information." at the bottom and click the **Next** button.

##### Step 2) Select item

Select the data items to back up and click the **Next** button to go to the next step.

##### Step 3) Select location

Select where to back up the data. Click **Browse** on the screen, select a location and click the **Next** button.

##### Step 4) Start backup

The backup information is displayed in the progress window. The information includes files, processed volume/total volume, processed file count/total file count and progress status.

##### Step 5) Finish backup

Click the **Finish** button to finish the backup process.

#### Restore process

Follow the warnings when starting the restore process. If any issues should arise, follow the message on the screen.

##### Step 1) Warnings

Read the warnings about the restore process thoroughly. Select "I have read all of the information." at the bottom and click the **Next** button.

##### Step 2) Select file

Click **Browse** to select a file to restore and go to the next step.

##### Step 3) Select item

Select the data items to restore and click the **Next** button to go to the next step.

##### Step 4) Start restore

The restore information is displayed in the progress window. The information includes files, processed volume/total volume, processed file count/total file count and progress status.

##### Step 5) Finish restore

Click the **Finish** button to finish the restore process.

#### View log

After the device is connected, click Backup & Restore in the toolbox to open a window and click **View log**. You can view

a Backup & Restore log and then delete it.

※ If the device is not connected, the View log button will not work.

## 05 Application description

### 5.27. Install/Uninstall mobile phone application

#### Overview

Samsung New PC Studio allows you to install or uninstall an application on your mobile phone.

- ※ You can only install or uninstall mobile phone applications.
- ※ This function is only available for mobile phones equipped with Windows Mobile or Symbian.
- ※ Some programs may not be available depending on the country setting.

#### Change mobile phone

- 1) Click the connected mobile phone display area.
  - 2) Select the mobile phone model you want from the connected mobile phone list.
  - 3) The details of the selected mobile phone are displayed on the screen.
- ※ Only mobile phones equipped with Windows Mobile and Symbian are displayed on the list.
  - ※ Mobile phone information displayed on the screen: OS, memory capacity, installed applications

#### Install application

##### Option 1

- 1) Select **Install application** from the menu.
- 2) Select an application file to install from the Open file window and click the **Open** button.
- 3) Follow the instructions on the mobile phone screen to complete the installation process.
- 4) When the installation is complete, a pop-up window will appear. Click the **OK** button to display the new application on the list.

##### Option 2

- 1) Click the **Install application** button at the bottom.
- 2) Select an application file to install from the Open file window and click the **Open** button.
- 3) Follow the instructions on the mobile phone screen to complete the installation process.
- 4) When the installation is complete, a pop-up window will appear. Click the **OK** button to display the new application on the list.

##### Option 3

- 1) Select an install file in **My Computer**, and drag & drop it to the application list area.
  - 2) Follow the instructions on the mobile phone screen to complete the installation process.
  - 3) When the installation is complete, the pop-up window appears. Click the **OK** button to display the new application on the list.
- ※ If the installation fails, a pop-up window will appear displaying the error.
  - ※ For an application that can undergo re-installation, select the application from the list, click the **Install application** button at the bottom and follow the instructions on the mobile phone screen.
  - ※ Available file extensions: \*. CAB (Windows Mobile) , \*. SIS (Symbian)

#### Uninstall application

##### Option 1

- 1) Select an application to uninstall from the application list.
- 2) Select **Uninstall application** from the menu.
- 3) Click the **Yes** button in the Uninstall application confirmation window.
- 4) The uninstallation process will begin.
- 5) When the uninstallation is complete, a pop-up window will appear. Click the **OK** button to remove the application from the list.

##### Option 2

- 1) Select an application to uninstall from the program list.
  - 2) Click the **Uninstall application** button at the bottom.
  - 3) Click the **Yes** button in the Uninstall application confirmation window.
  - 4) The uninstallation process will begin.
  - 5) When the uninstallation is complete, a pop-up window will appear. Click the **OK** button to remove the application from the list.
- ※ If the uninstallation fails, a popup window appears, stating the error.
  - ※ To uninstall an application that can be installed again, select it from the list and click the **Uninstall application** button at the bottom to start the uninstallation process. The application is then displayed as an uninstalled program on the list.

## **Refresh**

### **Option 1**

- 1) Select **Refresh** from the menu.
- 2) The list is refreshed.

### **Option 2**

- 1) Click the **Refresh** button at the bottom.
- 2) The list is refreshed.

## 05 Application description

### 5.28. Connected Home Player

#### Overview

You can play streaming multimedia files (music, image or video file) in a device supporting DLNA through a Wi-Fi network.

#### Configuring application

##### Video, music (default control)

- 1) **Menu button** < Shortcut : F10 >
  - ▶ Provides help and version information.
- 2) **Display file name. File type-File size**
  - ▶ Displays the title, file type, and file size of the media file being viewed or played.
- 3) **Play Screen**
  - ▶ Shows the image or video being played.
- 4) **Play Status**
  - ▶ Displays the current Play status (Current playtime/Total playtime).
  - ▶ You can search a video by dragging left and right while holding the left mouse button down. (Playtime is displayed on the screen.)
- 5) **Play/Pause Button** < Shortcut : [space], [x] >
  - ▶ Plays or pauses a video or music.
- 6) **Stop Button** < Shortcut : [c] >
  - ▶ Stops play.
- 7) **Mute Button** < Shortcut : [a] >
  - ▶ Mutes or reactivates the sound.
- 8) **Volume Control Bar** < Shortcut : [↓], [s], [wheel down] / [↑], [d], [wheel up] >
  - ▶ Controls volume by dragging left and right while holding down the left mouse button.

##### Image

- 1) **Menu button** < Shortcut: F10 >
  - ▶ Opens a file and provides version information.
- 2) **File name. File type (current order / total count) display**
  - ▶ Displays the name and type of image you are currently viewing, as well as the total number of images in the folder and the order of the current image.
- 3) **Image window**
  - ▶ Shows the selected image.
- 4) **File information display window**
  - ▶ Displays the size, volume and last modified date of the current image.
  - ▶ Displays the size information in % when resizing the file.
- 5) **Previous button** < Shortcut: [←], [z], [Page Up] >
  - ▶ Opens an image ordered before the current image.
- 6) **Next button** < Shortcut: [→], [x], [Page Down] >
  - ▶ Opens an image ordered after the current image..
- 7) **Rotate left / Rotate right button** < Shortcut: [c]/[v] >
  - ▶ Rotates an image 90 degrees clockwise or counterclockwise.
- 8) **Fit to window size button**
  - ▶ Adjusts the image to fit to the window size.
- 9) **Zoom out button** < Shortcut: [↓], [scroll down], [s] >
  - ▶ Zooms out an image step by step.
  - ▶ 15 Steps: 5/10/15/20/30/50/70/100/150/200/300/500/700/1000/1500%
- 10) **Zoom in button** < Shortcut: [↑], [scroll up], [d] >
  - ▶ Adjusts the image to fit to the window size.
  - ▶ 15 Steps: 5/10/15/20/30/50/70/100/150/200/300/500/700/1000/1500%

#### Full screen < Shortcut : [Ctrl]+[F] >

- 1) Right-click in the area of Play screen.
- 2) When Menu appears, click **Full screen**.
  - ※ In Full screen play, the control bar appears only when the mouse pointer is located at the top or bottom of the screen.
  - ※ To return to the previous screen size, press the ESC key or click the General mode button on the top right.

## Play

- 1) Connect a device supporting DLNA to the Wi-Fi network.
- 2) When the list of servers connected to the network is displayed in the playlist, click a server you want.
- 3) Browse the folders and select a file you want.
  - \* You can use the **Back, Forward, Up and Media server home** buttons provided for your convenience.
- 4) Click the **Play** button.
  - \* When playing a video or music file, the playback control bar functions differently than when viewing an image file.